

HIGH. TECH S.TECH

SPRING Instructions

Thank you for purchasing a set of TEIN HIGH.TECH / S.TECH SPRINGS (the "product"). Please read these Instructions carefully before installation. This product is for off-road (including racing) and show purposes. In addition, this product may be used for normal street driving purposes so long as the purchaser's use of this product complies with the automotive light height and other requirements of applicable laws. The spring rate (spring hardness) differs from factory standard suspensions. Therefore, drive carefully, safely, and avoid turning the steering wheel abruptly.

The contact information for TEIN's Downey California office is:

TEIN U. S. A., INC.

9798 Firestone Blvd. Downey, CA 90241
Phone (562) 861-9161 / Fax (562) 861-9171

TEIN U.S.A., INC. and its related companies ("TEIN") assumes no responsibility for any accident, injuries, death or damage which may be related any repair or modification of the product performed by non-TEIN personnel.

ALL PRODUCTS SOLD HEREWITH ARE SUBJECT TO THE TEIN HIGH.TECH / S.TECH SPRING LIMITED WARRANTY ENCLOSED HEREWITH. PLEASE READ SUCH LIMITED WARRANTY CAREFULLY PRIOR TO INSTALLING OR USING THE PRODUCT.

Preface

WARNING

- The removal of brake parts and springs requires specialized skills. Therefore, INSTALLATION OF THIS PRODUCT SHOULD BE DONE BY LICENSED MECHANICS ONLY.
- This document is copyrighted and the unauthorized printing and/or distribution of this document, in part or in full, is prohibited by law.

CAUTION

- This product has been developed according to the specifications of Japanese law.
- Do not install this product in vehicles other than those specified by the label indicated on the carton. Doing so may result in damage to the vehicle or to the product.
- TEIN assumes no responsibility for damage, accidents, injuries or death resulting from the improper installation, assembly, misuse, and/or modification of the product.

NOTE

- Please read these Instructions before installation.
- Before installing this product, verify that all necessary parts have been included.
- Note that product design improvements and changes may be made without notice.

Important Product Information

WARNING

- This product has been designed to withstand the stresses of off-road driving. Therefore, the product should not be modified in any way.
- In order to avoid possible injury caused by spring expansion resulting from improper installation, as stated in the Preface hereto, INSTALLATION OF THIS PRODUCT SHOULD BE DONE BY LICENSED MECHANICS ONLY.

CAUTION

- When removing or tightening the top nut, do not clamp the piston rod or the threaded section of the piston rod with any tool which might cause scratching.
- Do not expose this product to excessive stress or shock (for example, physically dropping the product).
- If the piston rod is scratched, the oil seal may become damaged which may create oil leak defects.

Before/After Installation

⚠ WARNING

- The installer assumes all liability for proper installation of the product. Please read these Instructions carefully before beginning installation.

⚠ CAUTION

- The upper mount and spring seat used with this product must be OEM. Upper mounts and spring seats made by other manufacturers may not properly fit with this product.
- TEIN TAKES NO RESPONSIBILITY FOR ANY DAMAGE TO THE SUSPENSION OR ACCIDENTS RESULTING FROM THE COMBINATION OF THIS PRODUCT WITH PRODUCTS MADE BY OTHER MANUFACTURERS.
- Installer should wear work gloves when installing the product to avoid injury.
- PLEASE CHECK YOUR LOCAL MOTOR VEHICLE LAWS AND REGULATIONS REGARDING INSTALLED HEIGHT SUSPENSION (E. G. MINIMUM RIDE HEIGHT, MINIMUM HEADLIGHT CENTER HEIGHT).
- TEIN takes no responsibility for any violations of vehicle codes, rules, laws, or regulations.
- Upon installation, avoid rough handling and drive slowly.
- Be sure to check product for loosening and oil leaks.
- Periodically re-tighten all parts at the specified torque values.
See the manufacturer service manual for specified torque values.
- After installation of this product, the alignment should be adjusted with an alignment tester.

SPRING Removal and Installation

⚠ CAUTION

- USE A SPRING COMPRESSOR TO COMPRESS THE SPRING IN ORDER TO REMOVE THE TOP LOCK NUT.
- MAKE SURE THAT THE SPRING IS COMPRESSED AND NOT IN CONTACT WITH THE SPRING SEAT BEFORE REMOVING TOP NUT.
- When loosening the spring compressor, loosen the spring evenly and carefully remove the coil from the shock absorber.
- DO NOT RE-USE THE PISTON ROD TOP LOCK NUT.
- Replace the new top lock nut when you assemble the suspension.

BUMP RUBBER

DO NOT REMOVE BUMP RUBBER (BUMP STOP).

Bump Rubber must be installed on the vehicle.
On some vehicles, it is required to cut the Bump Rubber before installing on the piston rod.
See attached chart for "Cut Type" and sizes on each vehicle models.

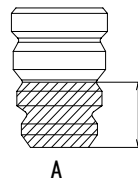
! NOTE

If there is no information on cutting the bump rubber, then install the bump rubber without any modifications.

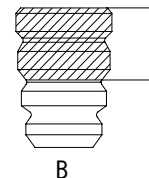
RIDE HEIGHT

⚠ CAUTION

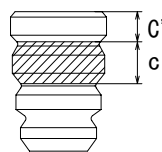
ANY RIDE HEIGHT FIGURES SHOWN IN TEIN'S CATALOG MAY VARY WITH RESPECT TO ANY PARTICULAR VEHICLE. DEPENDING UPON VEHICLE WEIGHT, MODEL AND OPTIONS.



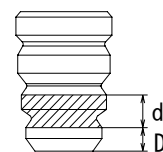
A



B



C



D

Cut at 'C' inches lines from the upper end and at 'c' inches from that line, then remove the middle part ('c'-inch thickness).

Cut at 'D' inches lines from the bottom end and at 'd' inches from that line, then remove the middle part ('d'-inch thickness).

Important Notice

- Purchaser is solely responsible for installing and using this product in compliance with automotive light height and other requirements of applicable laws.
- TEIN takes no responsibility for parts which are prohibited by local laws.
- Purchaser takes full responsibility for proper part installation.
- All parts should be installed by a properly licensed mechanic.
- TEIN takes no responsibility for damage, injuries, or death caused directly or indirectly by this product.
- TEIN will not take any responsibility for any inadvertent errors and/or omissions contained in these Instructions.