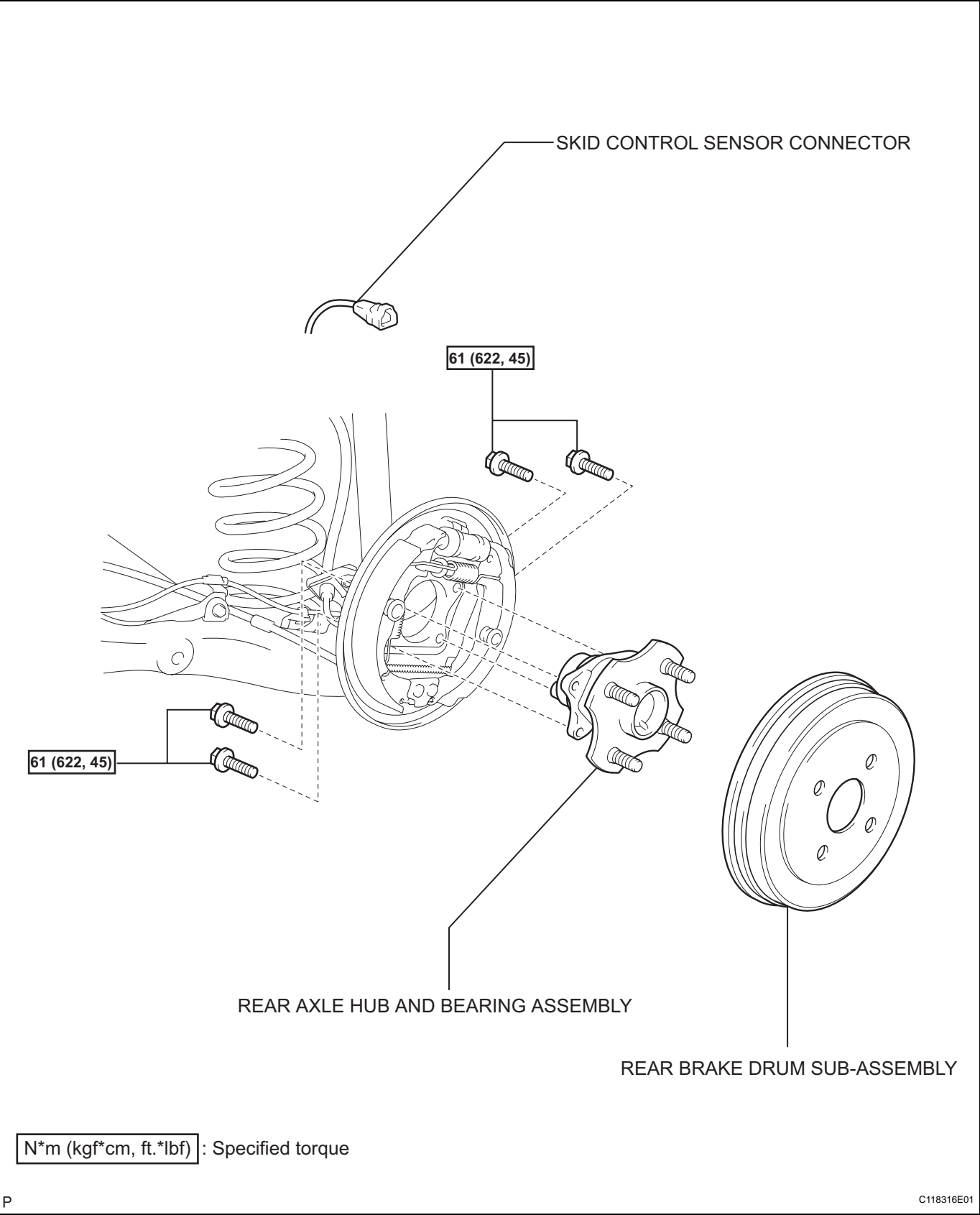
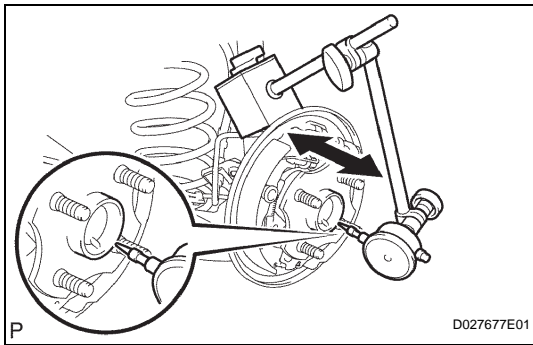


REAR AXLE HUB
COMPONENTS





ON-VEHICLE INSPECTION

1. CHECK REAR AXLE BEARING

- (a) Remove the rear wheel.
- (b) Remove the rear brake drum sub-assembly.
- (c) Inspect the bearing backlash.
 - (1) Using a dial indicator, check for backlash near the center of the axle hub.

Maximum backlash:

0.05 mm (0.0020 in.)

If the backlash exceeds the maximum, replace the rear axle hub and bearing assembly.

- (d) Inspect the axle hub deviation.
 - (1) Using a dial indicator, check for deviation in the surface of the axle hub inside the hub bolt.

Maximum deviation:

0.07 mm (0.0028 in.)

If the deviation exceeds the maximum, replace the rear axle hub and bearing assembly.

