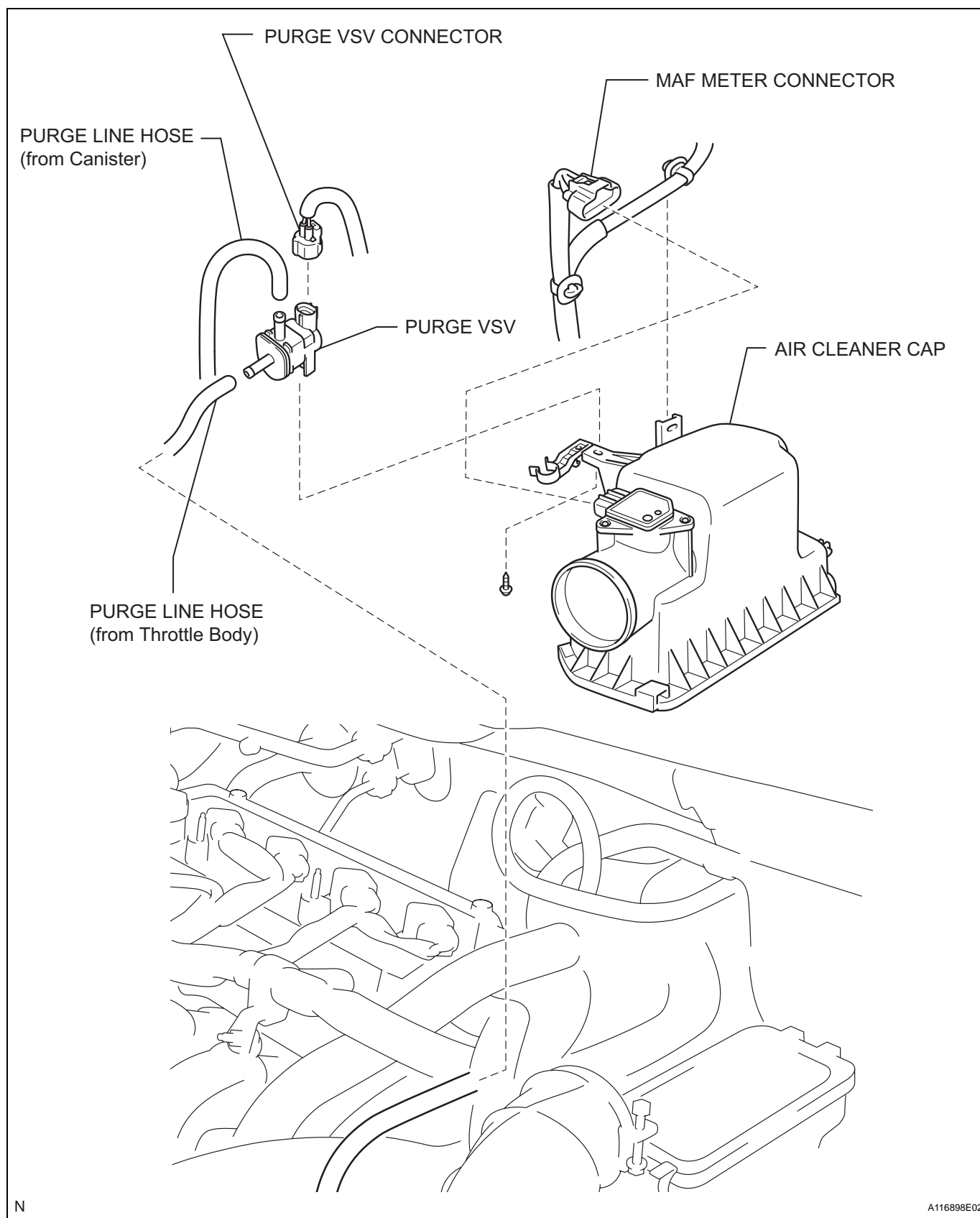


VACUUM SWITCHING VALVE

COMPONENTS



EC

REMOVAL

1. DISCONNECT CABLE FROM NEGATIVE BATTERY TERMINAL
- CAUTION:
Wait at least 90 seconds after disconnecting the cable from the negative (-) battery terminal to prevent airbag and seat belt pretensioner activation.
2. REMOVE AIR CLEANER CAP
- (a) Disconnect the MAF meter connector.

(b) Disconnect the purge VSV connector.

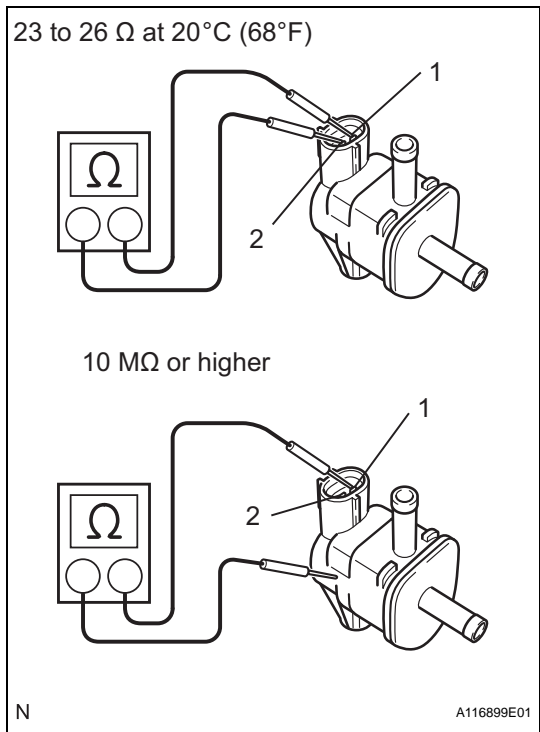
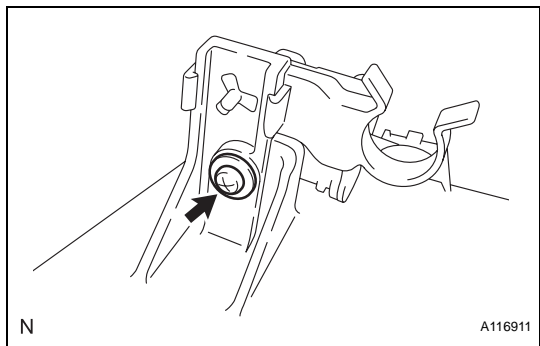
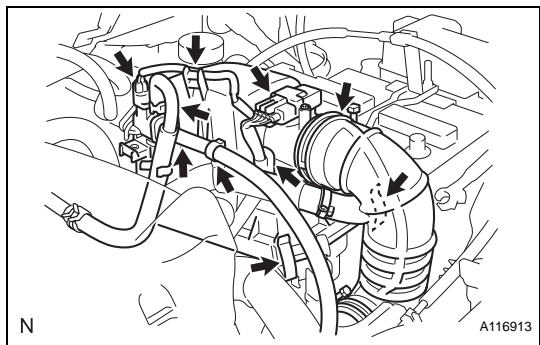
(c) Disconnect the 2 wire harness clamps from the air cleaner cap.

(d) Disconnect the 2 purge line hoses.

(e) Disconnect the purge line hose from the hose clamp.

(f) Unlock the 2 clamps holding the air cleaner cap to the air cleaner case.

(g) Loosen the hose clamp and remove the air cleaner cap.
3. REMOVE PURGE VSV
- (a) Remove the screw and purge VSV.



INSPECTION

1. INSPECT PURGE VSV
- (a) Measure the resistance of the purge VSV.
- Standard resistance

Tester Connection	Specified Condition
1 - 2	23 to 26 Ω at 20°C (68°F)
1 - Body ground 2 - Body ground	10 MΩ or higher

If the result is not as specified, replace the purge VSV.