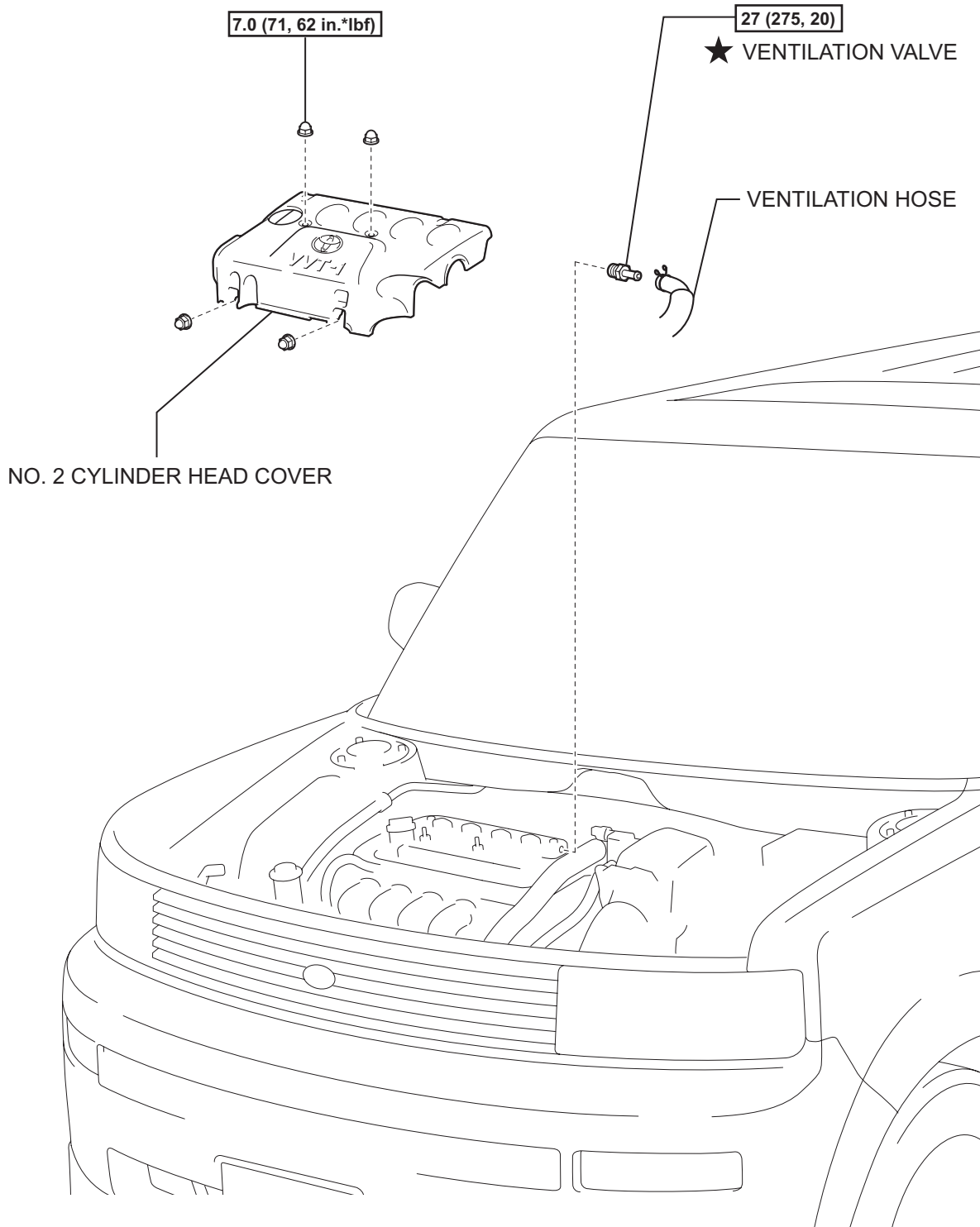


# VENTILATION VALVE

## COMPONENTS

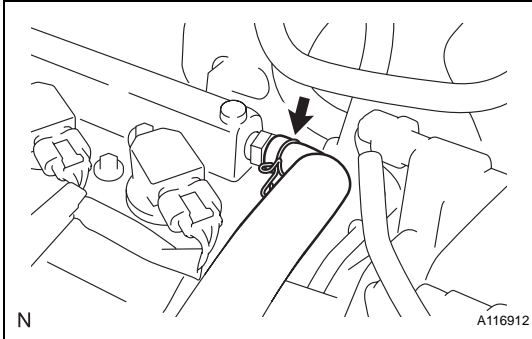


N\*m (kgf\*cm, ft.\*lbf) : Specified torque

★ Precoated part

## REMOVAL

1. **REMOVE NO. 2 CYLINDER HEAD COVER** (See page [EM-25](#))
2. **DISCONNECT VENTILATION HOSE**
  - (a) Disconnect the ventilation hose from the ventilation valve.
3. **REMOVE VENTILATION VALVE**
  - (a) Remove the ventilation valve.

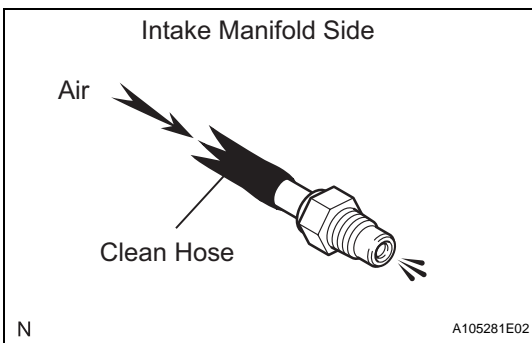
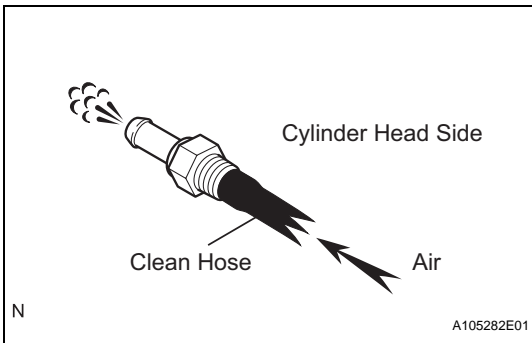


## INSPECTION

1. **INSPECT VENTILATION VALVE**
  - (a) Install a clean hose to the ventilation valve.
  - (b) Check the ventilation valve operation.
    - (1) Blow air into the cylinder head side, and check that air passes through easily.

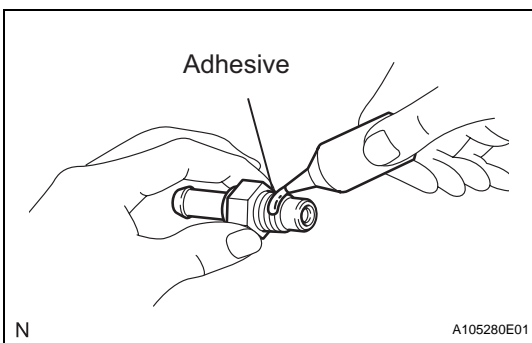
**CAUTION:**  
Do not suck air through the valve.  
Petroleum substances inside the valve are hazardous to your health.

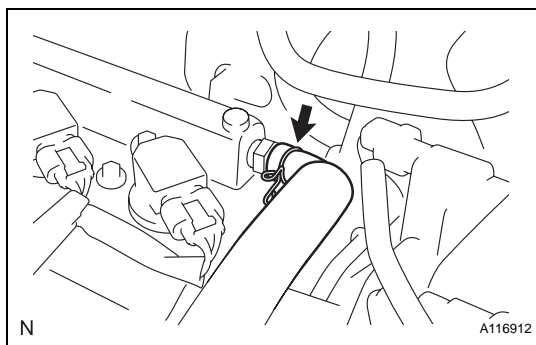
    - (2) Blow air into the intake manifold side, and check that air passes through with difficulty. If the result is not as specified, replace the ventilation valve.
  - (c) Remove the clean hose from the ventilation valve.



## INSTALLATION

1. **INSTALL VENTILATION VALVE**
  - (a) Apply adhesive to 2 or 3 threads of the valve.  
**Adhesive:**  
**Part No. 08833-00070, THREE BOND 1324 or equivalent.**
  - (b) Install the ventilation valve.  
**Torque: 27 N\*m (275 kgf\*cm, 20 ft.\*lbf)**



**2. CONNECT VENTILATION HOSE**

(a) Connect the ventilation hose to the ventilation valve.

**3. INSTALL NO. 2 CYLINDER HEAD COVER (See page [EM-31](#))**