

REMOVAL

1. **DISCONNECT CABLE FROM NEGATIVE BATTERY TERMINAL**

CAUTION:

Wait at least 90 seconds after disconnecting the cable from the negative (-) battery terminal to prevent airbag and seat belt pretensioner activation.

2. **REMOVE SHIFT LEVER KNOB** (for Manual Transaxle)
3. **REMOVE REAR CONSOLE BOX** (See page [IP-29](#))

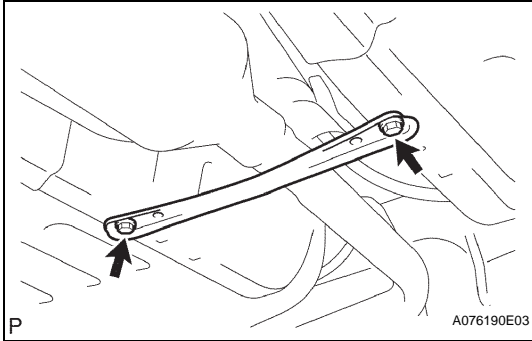
4. **REMOVE FRONT FLOOR PANEL BRACE**

(a) Remove the 2 bolts and floor panel brace.

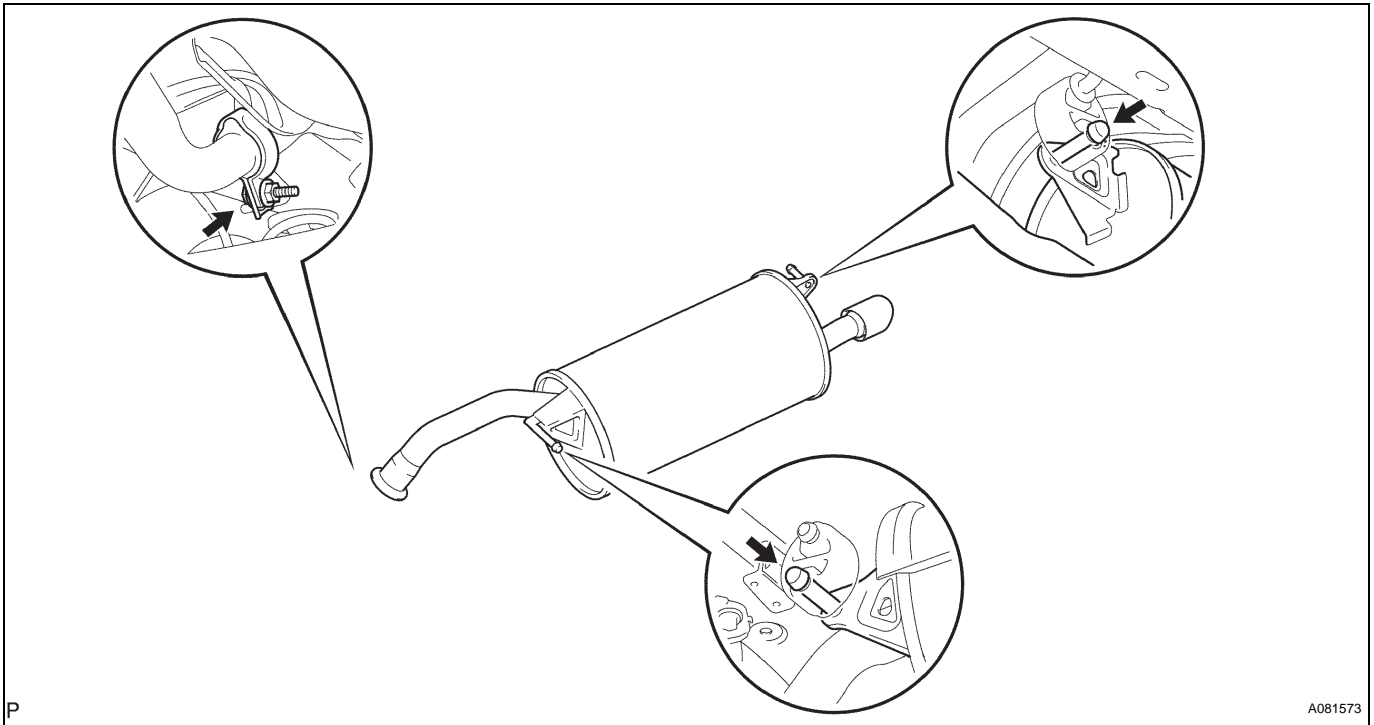
5. **REMOVE TAILPIPE**

(a) Remove the bolt and clamp.

(b) Disconnect the 2 exhaust pipe supports, and remove the tailpipe and gasket.



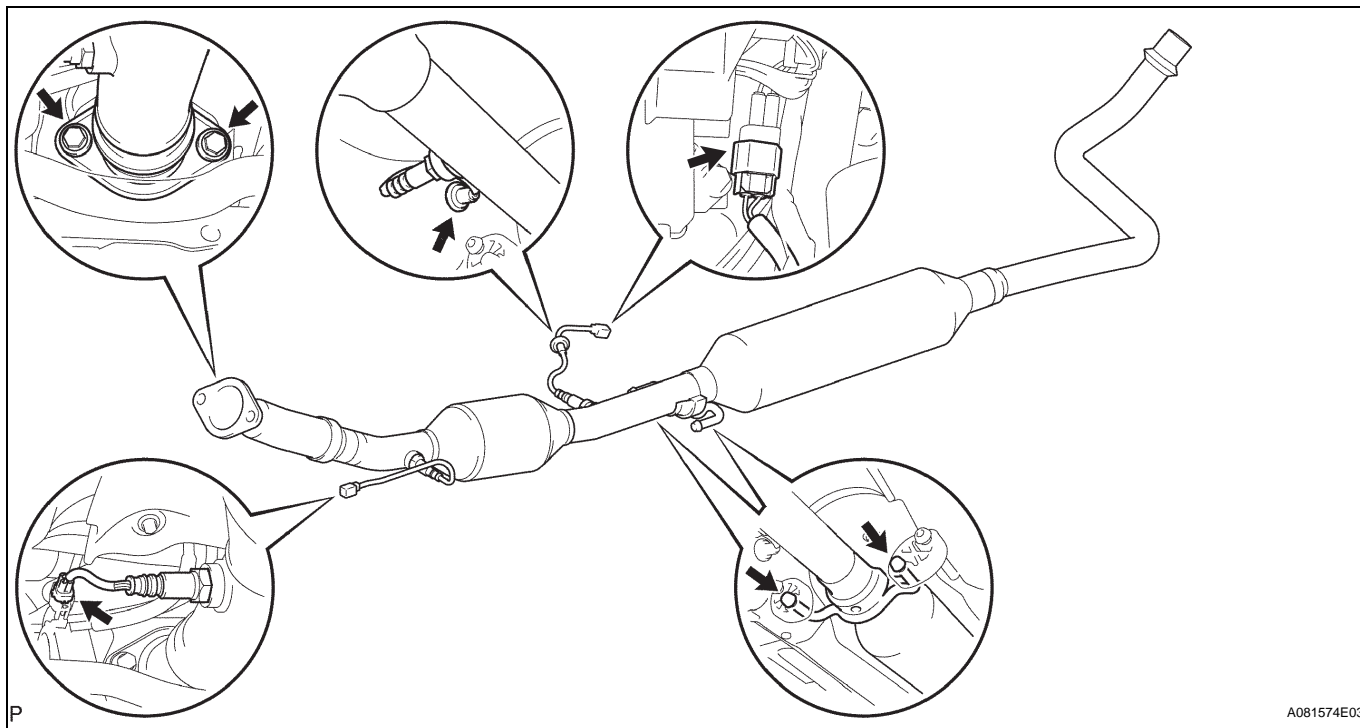
EX



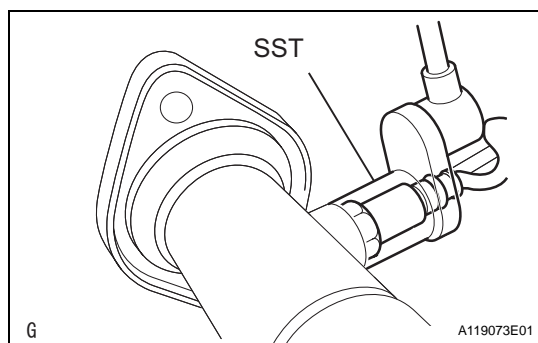
6. **REMOVE FRONT EXHAUST PIPE**

(a) Disconnect the 2 heated oxygen sensor connectors.
 (b) Remove the grommet.
 (c) Remove the 2 bolts and 2 compression springs.
 (d) Disconnect the 2 exhaust pipe supports, and remove the front exhaust pipe.

(e) Remove the gasket from the exhaust manifold.



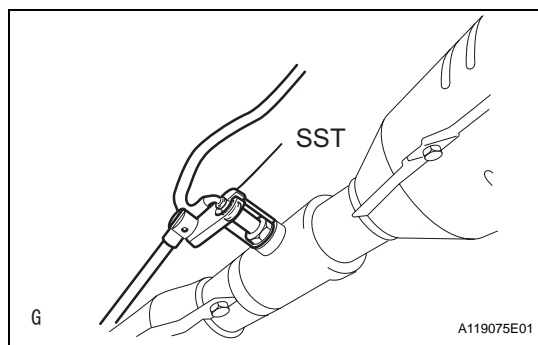
EX



7. REMOVE HEATED OXYGEN SENSOR (for Bank 1 Sensor 1)

- (a) Using SST, remove the sensor from the front exhaust pipe.

SST 09224-00010



8. REMOVE HEATED OXYGEN SENSOR (for Bank 1 Sensor 2)

- (a) Using SST, remove the sensor from the front exhaust pipe.

SST 09224-00010