

**Part Number: PTS26-52050-01 (Silver)
PTS26-52050-11 (Gray)**

NOTE: Part number of this accessory may not be the same as the part number shown.

Kit Contents

Item #	Quantity Req'd.	Description
1	1	Billet Oil Cap
2	1	O-ring
3	2	AEM Stickers
4	1	Instructions

Vehicle Service Parts (may be required for reassembly)

Item #	Quantity Req'd.	Description

Hardware Bag Contents

Item #	Quantity Req'd.	Description

Additional Items Required For Installation

Item #	Quantity Req'd.	Description

Conflicts

--

Recommended Tools

Personal & Vehicle Protection	Notes
Special Tools	Notes
Installation Tools	Notes
Special Chemicals	Notes
Glass Cleaner	

General Applicability

All xA/xB/tC models

Recommended Sequence of Application

Item #	Accessory
1	Cold Air Intake
2	CF Engine Cover
3	Strut Tie Bar
4	Oil Cap

*Mandatory

Legend



STOP: Damage to the vehicle may occur. Do not proceed until process has been complied with.



OPERATOR SAFETY: Use caution to avoid risk of injury.



CAUTION: A process that must be carefully observed in order to reduce the risk of damage to the accessory/vehicle and to ensure a quality installation.



TOOLS & EQUIPMENT: Used in Figures calls out the specific tools and equipment recommended for this process.



REVISION MARK: This mark highlights a change in installation with respect to previous issue.

Please see page 2 for important “Care and Maintenance” information!

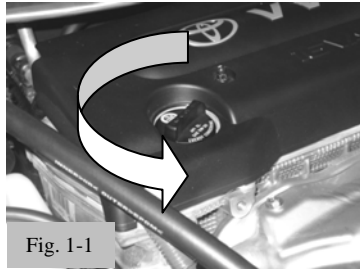
Care must be taken when installing this accessory to ensure damage does not occur to the vehicle. The installation of this accessory should follow approved guidelines to ensure a quality installation.

These guidelines can be found in the "Accessory Installation Practices" document.


This document covers such items as:-

- Vehicle Protection (use of covers and blankets, cleaning chemicals, etc.).
- Safety (eye protection, rechecking torque procedure, etc.).
- Vehicle Disassembly/Reassembly (panel removal, part storage, etc.).
- Electrical Component Disassembly/Reassembly (battery disconnection, connector removal, etc.).

Please see your Toyota dealer for a copy of this document.



1. Remove OE Oil Cap.

-  (a) Remove OE oil cap by turning counterclockwise. Fig. 1-1)

2. Install Billet Oil Cap.

- (a) Install Billet Oil Cap by turning clockwise. (Fig. 2-1)

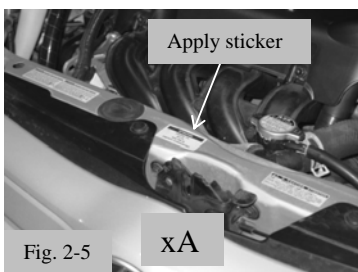
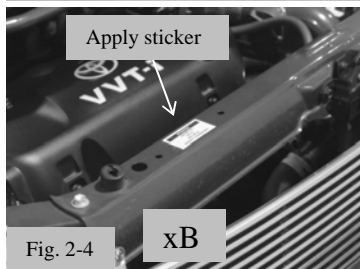
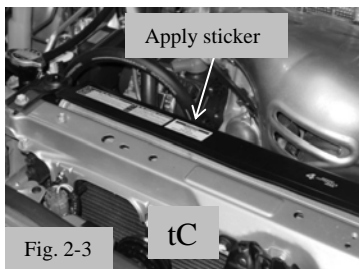
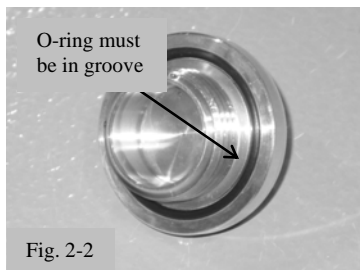
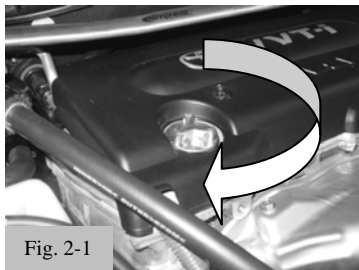


- (1) Make sure the o-ring is fully seated in the groove while tightening. (Fig. 2-2)

- (b) Apply enclosed sticker as shown. (Figs. 2-3, 2-4 and 2-5)

- (c) Clean the Oil Cap with glass cleaner.

- (d) **Installer** – The installation manual contains important **“Care and Maintenance”** information. Place the instruction manual and stickers in the glove box for future customer reference.



Caring For The Finish On Your AEM Oil Cap.

Your AEM Oil Cap has a brilliant powdercoat or anodized finish that ensures a maintenance free shine.

To clean your AEM Oil Cap, simply spray with window cleaner and wipe with a soft, clean terry-cloth towel.

NEVER use harsh chemicals or metal polish on your AEM Oil Cap. Harsh chemicals and metal polishes will permanently damage the finish of your AEM Oil Cap.