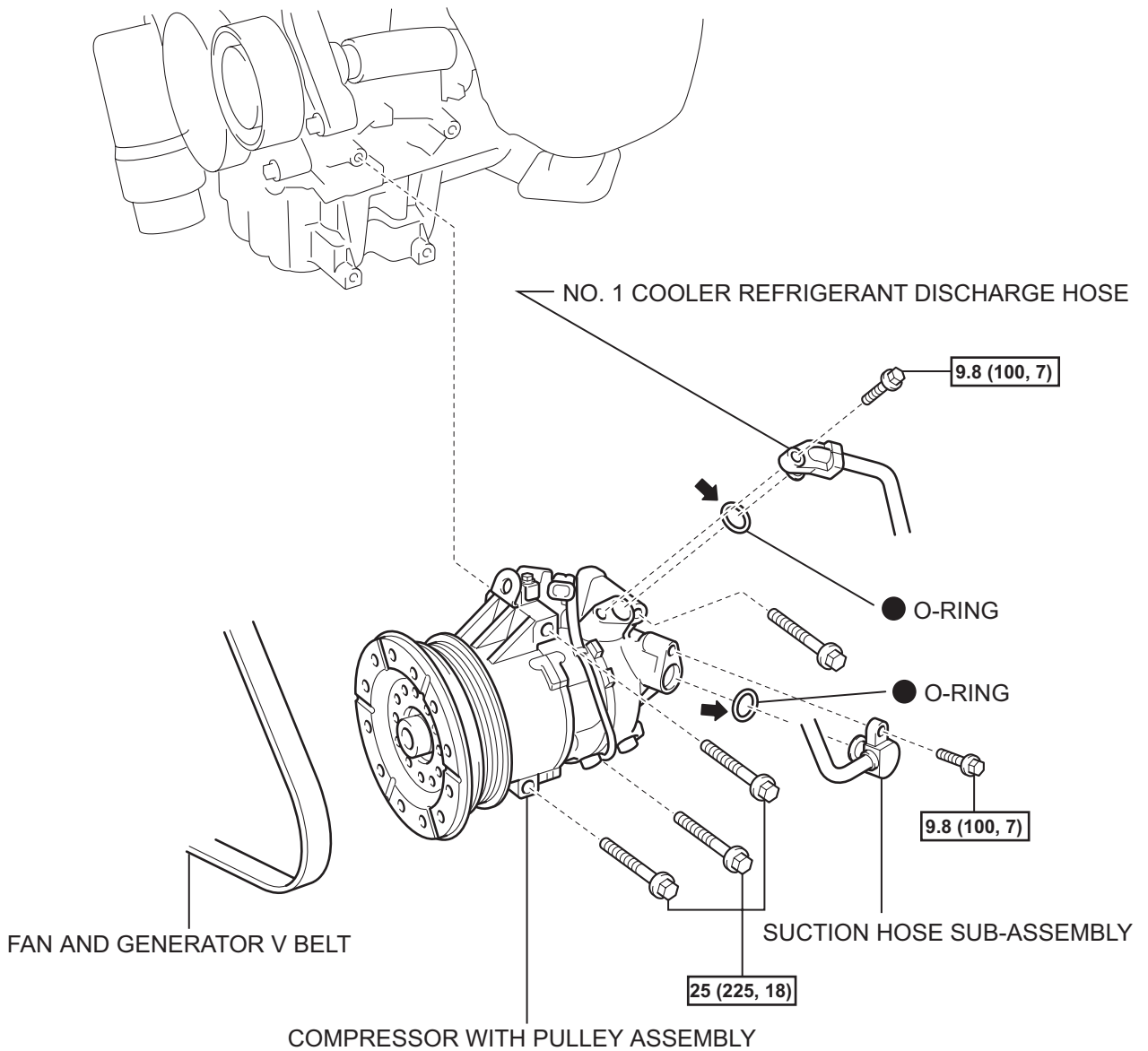


# COMPRESSOR AND PULLEY

## COMPONENTS



$\boxed{\text{N*m (kgf*cm, ft.*lbf)}}$  : Specified torque

● Non-reusable part

← Compressor oil ND-OIL 8 or equivalent

T

E116408E01

AC

**ON-VEHICLE INSPECTION****1. CHECK COMPRESSOR WITH PULLEY ASSEMBLY**

- (a) Inspect compressor resistance.
- (1) Disconnect the connector.
  - (2) Measure the resistance according to the value(s) in the table below.

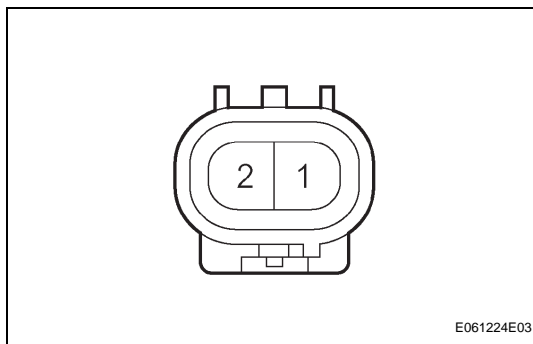
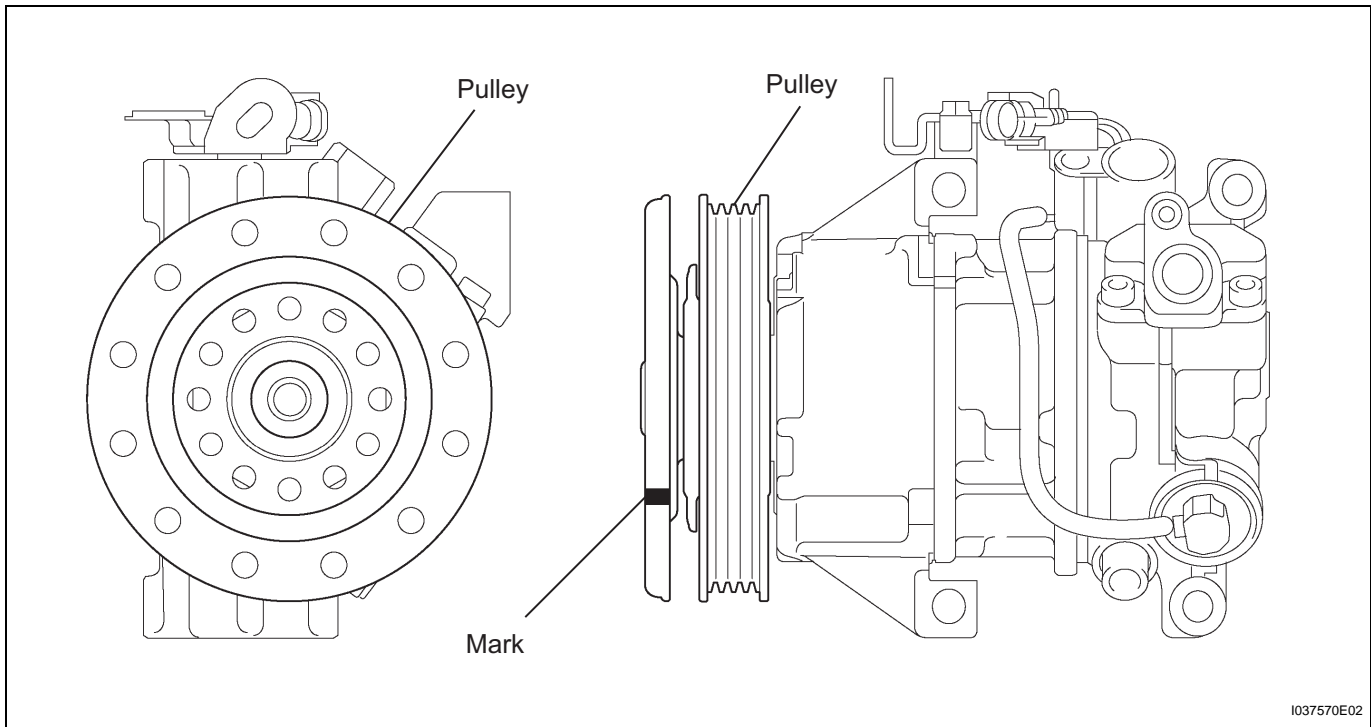
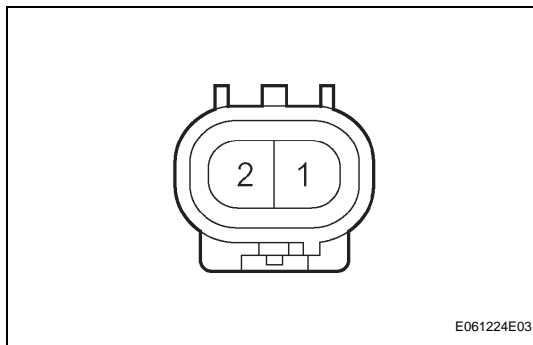
**Standard resistance**

Tester Connection	Specified Condition
1 - 2	10.1 to 11.1 $\Omega$

- (b) Check the operation.
- (1) Start the engine.
  - (2) Check the compressor pulley.

**OK:**

**The compressor shaft rotates along with the pulley.**



- (3) When the refrigerant amount and congestion of A/C cycle cannot be checked by the condition of the sight glass and manifold gauge, connect the positive battery cable to terminal 1 of the connector and the negative battery cable to the terminal 2 of the connector. Then check if cold air comes out while setting the blower switch to the "LO" position.