

FLOOR SHIFT PARKING LOCK CABLE ASSEMBLY

REPLACEMENT

NOTICE:

Be sure to read the precautionary notices concerning the SRS airbag system before servicing it.

1. DISCONNECT CABLE FROM NEGATIVE BATTERY TERMINAL

NOTICE:

Wait at least 90 seconds after disconnecting the cable from the negative (-) battery terminal to prevent airbag and seat belt pretensioner activation.

2. PLACE FRONT WHEELS FACING STRAIGHT AHEAD

3. REMOVE STEERING PAD ASSEMBLY

(a) Remove the steering pad (see page RS-187).

4. REMOVE STEERING WHEEL ASSEMBLY

(a) Remove the steering wheel (see page SR-7).

5. REMOVE STEERING COLUMN COVER

(a) Remove the steering column cover (see page SR-7).

6. REMOVE INSTRUMENT CLUSTER FINISH PANEL

(a) Remove the instrument cluster finish panel (see page IP-5).

7. REMOVE INSTRUMENT CLUSTER FINISH PANEL SUB-ASSEMBLY LOWER CENTER

(a) Remove the instrument cluster finish panel (see page IP-19).

8. REMOVE CONSOLE BOX REAR COVER

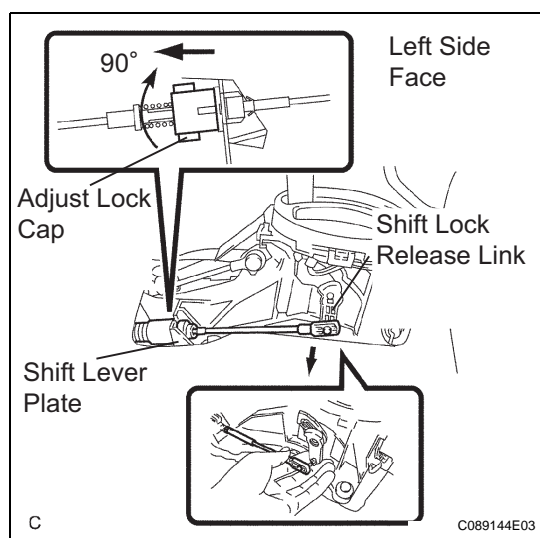
9. REMOVE CONSOLE BOX CARPET

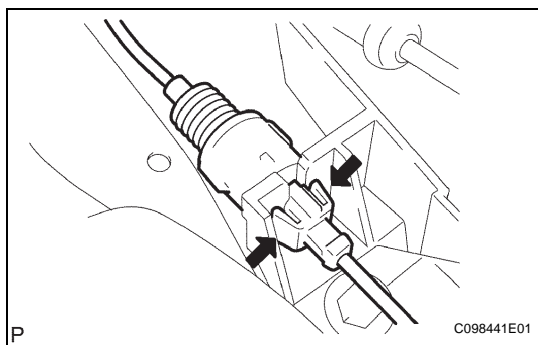
10. REMOVE REAR CONSOLE BOX ASSEMBLY

(a) Remove the rear console box (see page IP-29).

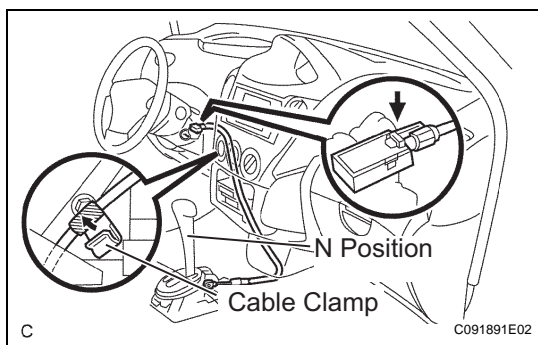
11. DISCONNECT FLOOR SHIFT PARKING LOCK CABLE ASSEMBLY

- (a) Rotate the adjust lock cap clockwise 90° so that it faces the front of the vehicle, and release it.
- (b) Push the claw and disconnect the floor shift parking lock cable from the shift lock release link.

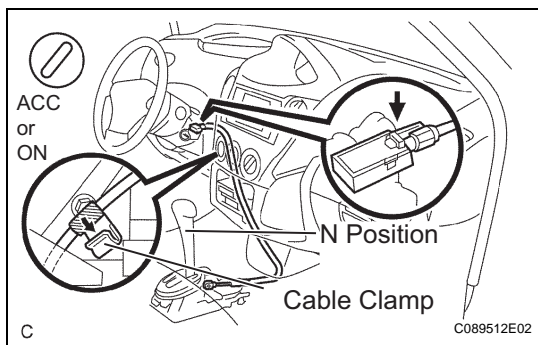




- (c) Using a screwdriver, disconnect the floor shift parking lock cable from the shift lever plate.

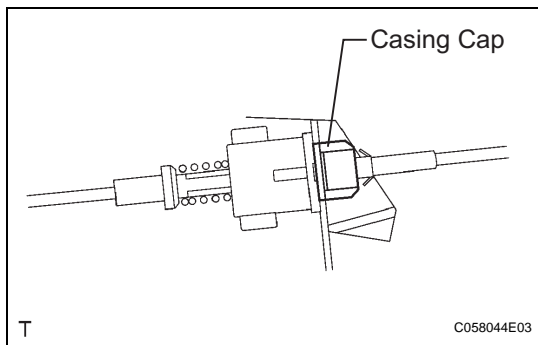


- (d) Disconnect the cable clamp.
 (e) Adjust the shift lever to the N position.
 (f) Disconnect the floor shift parking lock cable from the upper bracket.

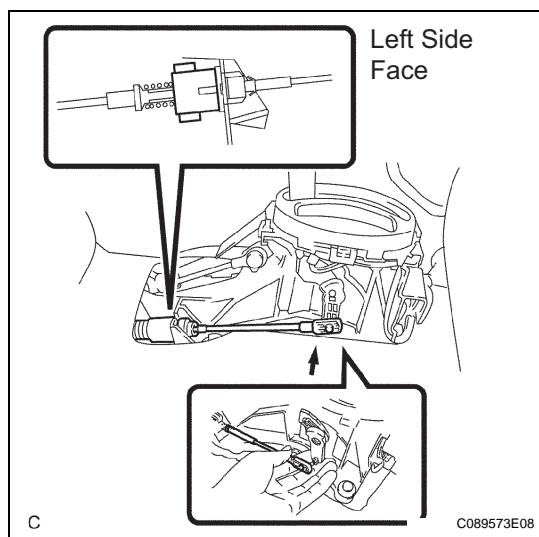


12. CONNECT FLOOR SHIFT PARKING LOCK CABLE ASSEMBLY

- (a) Turn the ignition switch to the ACC or ON position.
 (b) Connect the cable to the upper bracket.
 HINT:
 After installation, make sure that the lever pin is pulled by the cable and is stopped with the stopper.
 (c) Connect the cable clamp.
 (d) Move the shift lever to the N position.



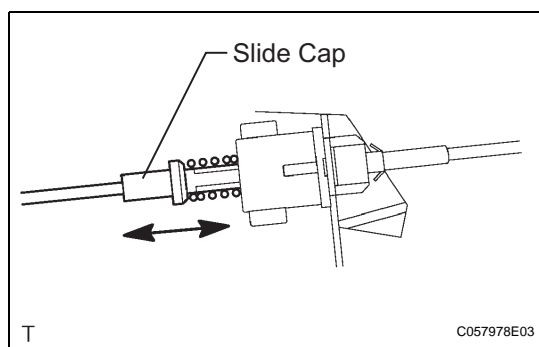
- (e) Insert the floor shift parking lock cable end rod in the slit of the shift lever plate.
 (f) Insert the casing cap of the cable into the shift lever plate through-hole.
 HINT:
 Check that it is inserted securely.



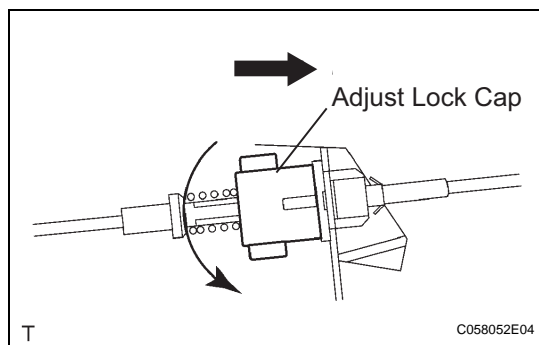
- (g) Insert the lever pin into the hole in the floor shift parking lock cable end.

HINT:

- At this time, ensure that the shift lever is in the N position.
- After installation, make sure that the lever pin is pulled by the floor shift parking lock cable and is stopped with the stopper.



- (h) Hold the slide cap and move it back and forth. Check that the spring for automatic adjustment works properly.



- (i) Rotate the adjust lock cap counterclockwise by 90° so that it faces the front of the vehicle, and attach it.

HINT:

- Install the floor shift parking lock cable on the shift lever side with the ignition switch in the ACC position.
- Make sure the slide amount of the spring for automatic adjustment is 8 mm (0.31 in.).

AX

13. INSTALL REAR CONSOLE BOX ASSEMBLY

- (a) Install the rear console box (see page [IP-30](#)).

14. INSTALL CONSOLE BOX CARPET

15. INSTALL CONSOLE BOX REAR COVER

16. INSTALL INSTRUMENT CLUSTER FINISH PANEL SUB-ASSEMBLY LOWER CENTER

- (a) Install the instrument cluster finish panel sub-assembly lower center (see page [IP-27](#)).

17. INSTALL INSTRUMENT CLUSTER FINISH PANEL

- (a) Install the instrument cluster finish panel (see page [IP-13](#)).

18. INSTALL STEERING COLUMN COVER

- (a) Install the steering column cover (see page [SR-13](#)).

19. INSTALL STEERING WHEEL ASSEMBLY

- (a) Install the steering wheel (see page [SR-13](#)).

20. INSTALL STEERING PAD ASSEMBLY

- (a) Install the steering pad (see page [RS-188](#)).

21. CONNECT CABLE TO NEGATIVE BATTERY TERMINAL

22. INSPECT STEERING PAD ASSEMBLY

- (a) Inspect the steering pad (see page [RS-186](#)).

23. INSPECT SRS WARNING LIGHT

- (a) Inspect the SRS warning light (see page [RS-18](#)).

24. CHECK KEY INTERLOCK OPERATION

- (a) Check the key interlock operation (see page [AX-105](#)).