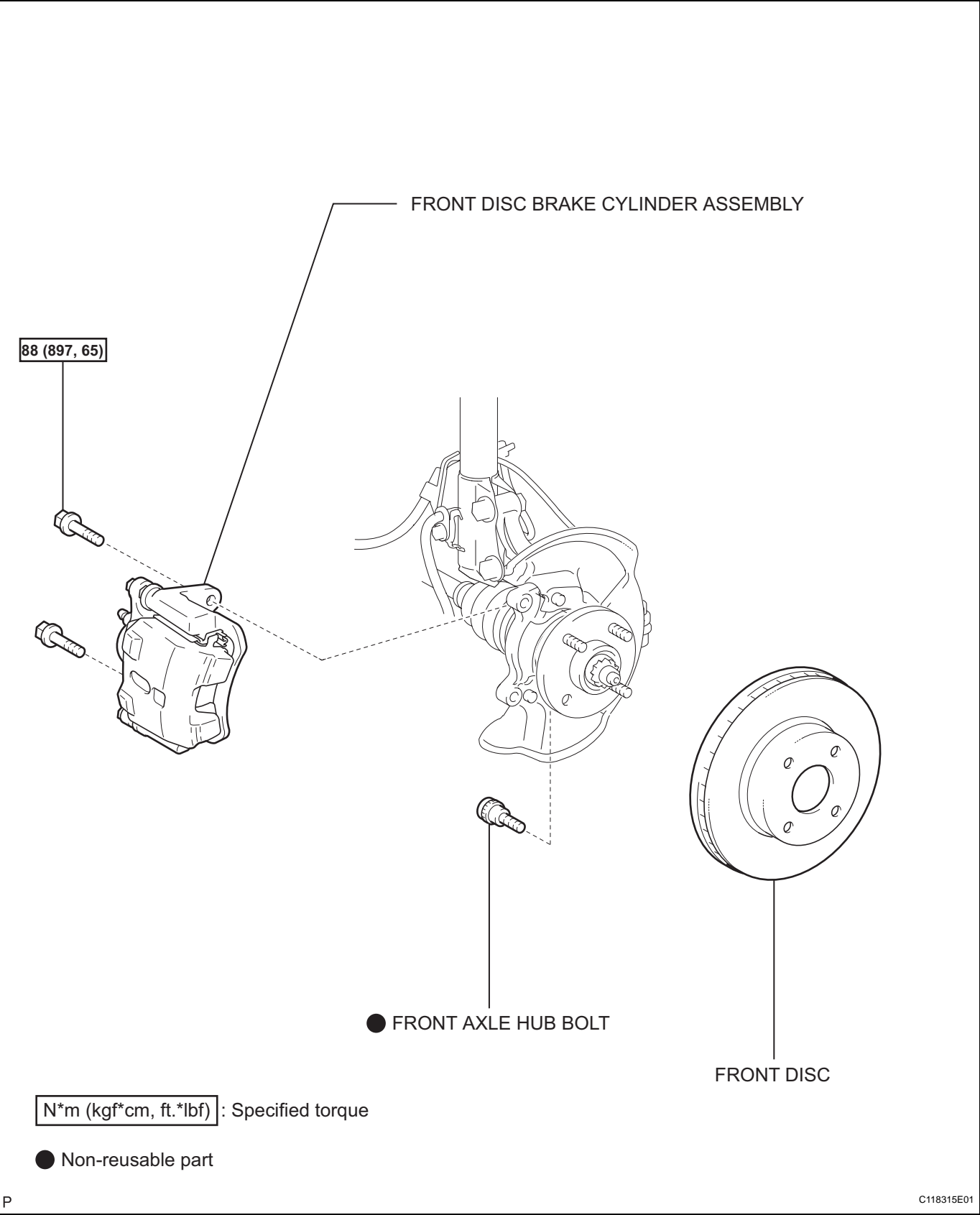


FRONT AXLE HUB BOLT

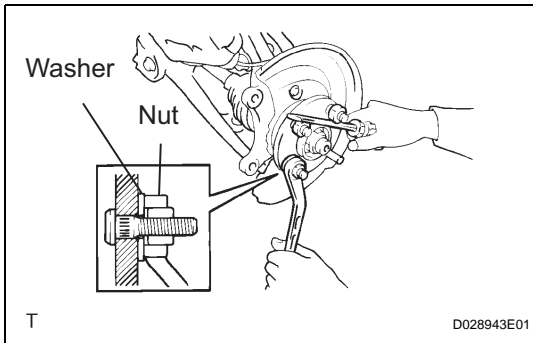
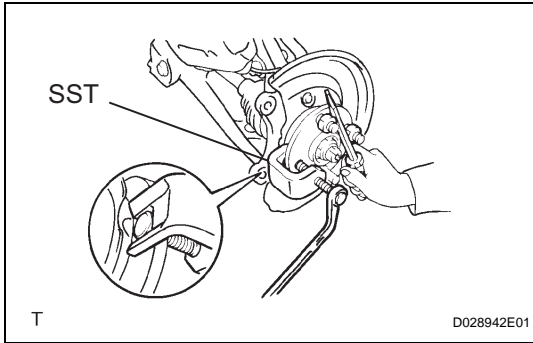
COMPONENTS



AH

REPLACEMENT

1. **REMOVE FRONT WHEEL**
2. **DISCONNECT FRONT DISC BRAKE CYLINDER ASSEMBLY**
 - (a) Disconnect the front disc brake cylinder assembly (see page [BR-23](#)).
3. **REMOVE FRONT DISC**
4. **REMOVE FRONT AXLE HUB BOLT**
 - (a) Using SST and a screwdriver or an equivalent to hold the axle hub, remove the hub bolt.
SST 09628-10011



5. **INSTALL FRONT AXLE HUB BOLT**
 - (a) Install the washer and nut to a new hub bolt as shown in the illustration.
 - (b) Using a screwdriver or an equivalent to hold the axle hub, install the hub bolt by tightening the nut.
6. **INSTALL FRONT DISC**
7. **CONNECT FRONT DISC BRAKE CYLINDER ASSEMBLY**
 - (a) Connect the front disc brake cylinder assembly (see page [BR-27](#)).
8. **INSTALL FRONT WHEEL**

Torque: 103 N*m (1,050 kgf*cm, 76 ft.*lbf)