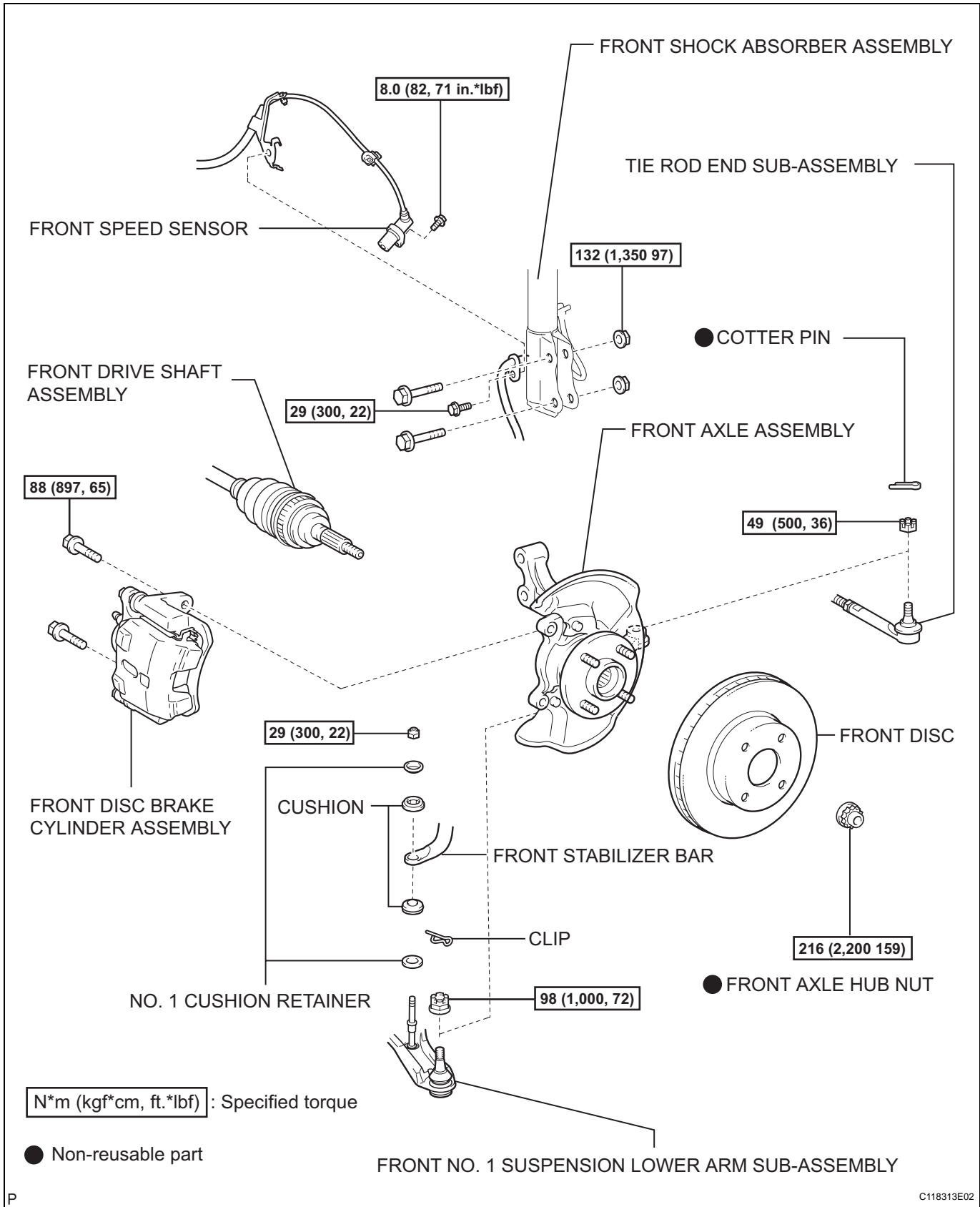
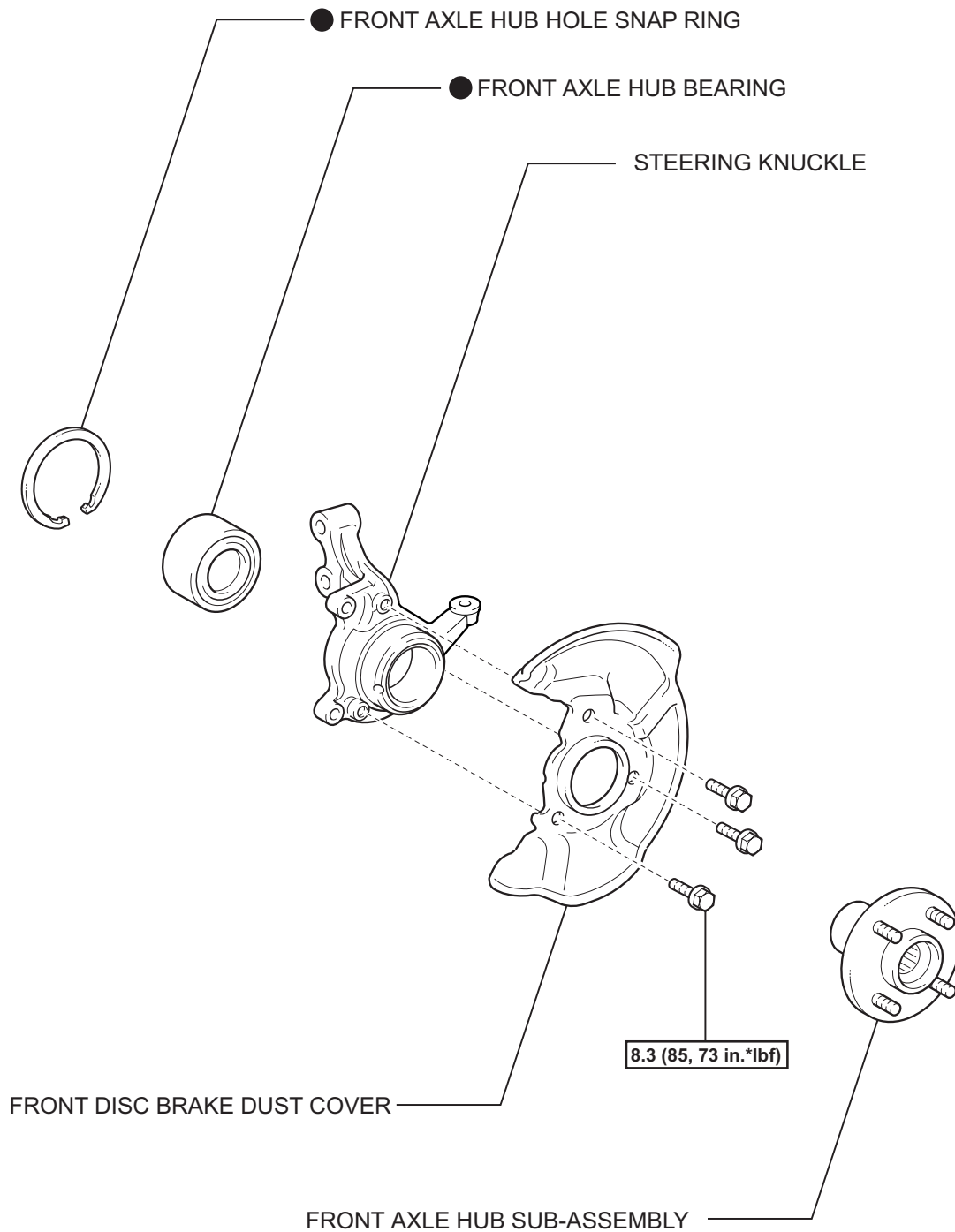


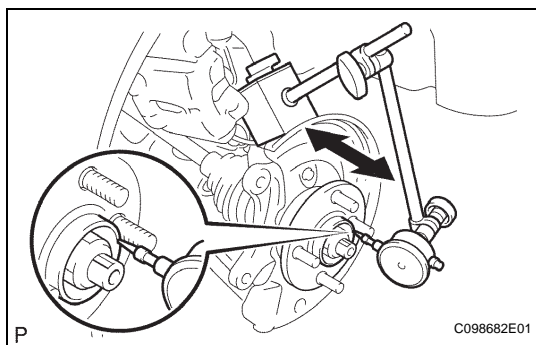
FRONT AXLE HUB

COMPONENTS





AH



ON-VEHICLE INSPECTION

1. CHECK FRONT AXLE HUB BEARING

- (a) Remove the front wheel.
- (b) Disconnect the front disc brake cylinder (see page [BR-23](#)).
- (c) Remove the front disc.
- (d) Inspect the axle hub backlash.
 - (1) Using a dial indicator, measure the backlash near the center of the axle hub.
- (e) Inspect the axle hub deviation.
 - (1) Using a dial indicator, measure the deviation on the surface of the axle hub.

Maximum backlash:

0.05 mm (0.0020 in.)

If the backlash is greater than the maximum, replace the bearing.

Maximum deviation:

0.05 mm (0.0020 in.)

If the deviation is greater than the maximum, replace the bearing.