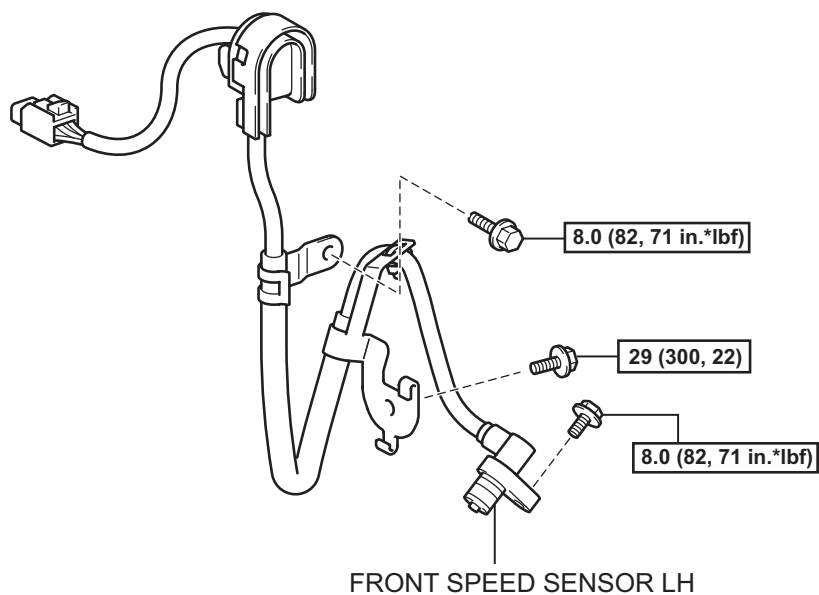


FRONT SPEED SENSOR

COMPONENTS



N*m (kgf*cm, ft.*lbf) : Specified torque

H

C117773E01

REMOVAL

HINT:

- Use the same procedures for the LH side and RH side.
- The procedures listed below are for the LH side.

1. DISCONNECT CABLE FROM NEGATIVE BATTERY TERMINAL

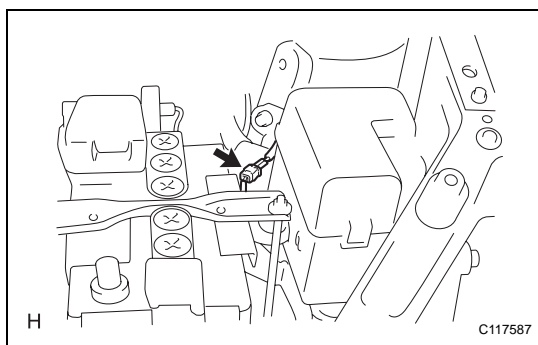
CAUTION:

Wait at least 90 seconds after disconnecting the cable from the negative (-) battery terminal to prevent airbag and seat belt pretensioner activation.

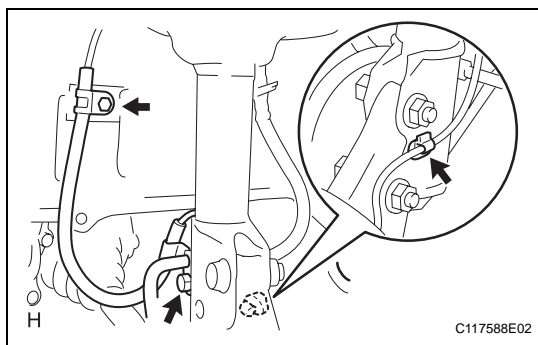
2. REMOVE FRONT WHEEL

3. REMOVE FRONT SPEED SENSOR LH

- (a) Disconnect the speed sensor connector.



- (b) Remove the 2 clamp bolts holding the speed sensor wire harness from the body and shock absorber.
- (c) Disconnect the resin clip and speed sensor wire harness from shock absorber.



- (d) Remove the bolt and speed sensor.

NOTICE:

Keep the sensor tip and sensor installation hole free from foreign matter.

