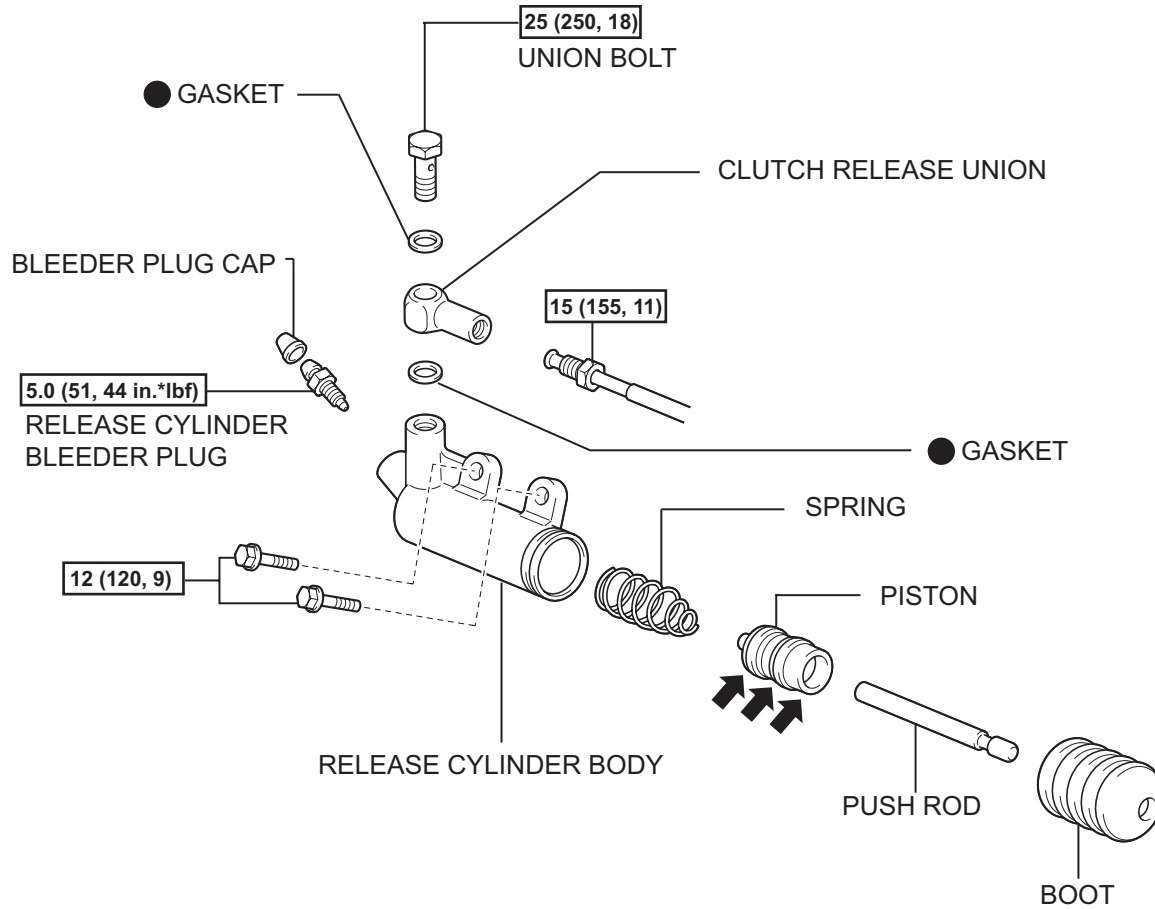


CLUTCH RELEASE CYLINDER

COMPONENTS

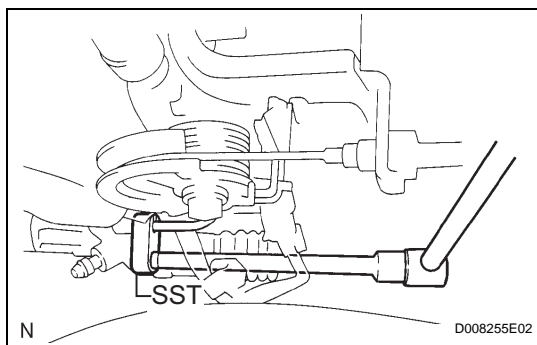


N*m (kgf*cm, ft.*lbf) : Specified torque

● Non-reusable part

← Lithium soap base glycol grease

CL



REMOVAL

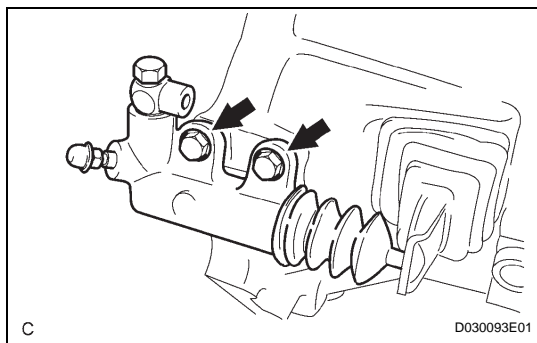
1. DISCONNECT CLUTCH RELEASE CYLINDER TO FLEXIBLE HOSE TUBE

- (a) Using SST, disconnect the tube.

SST 09023-00101

HINT:

Use a container to catch the fluid.



2. REMOVE CLUTCH RELEASE CYLINDER ASSEMBLY

- (a) Remove the 2 bolts and clutch release cylinder.