

HOW TO PROCEED WITH TROUBLESHOOTING

HINT:

Use these procedures to troubleshoot the wireless door lock control system.

1 VEHICLE BROUGHT TO WORKSHOP

NEXT

2 INSPECT BATTERY VOLTAGE

**Standard voltage:
11 to 14 V**

If the voltage is below 11 V, recharge or replace the battery before proceeding.

NEXT

3 PROBLEM SYMPTOMS TABLE

Result

Result	Proceed to
Fault is not listed in the problem symptoms table	A
Fault is listed in the problem symptoms table	B

B

Go to step 5

A

4 OVERALL ANALYSIS AND TROUBLESHOOTING

- (a) On-vehicle inspection (See page [DL-47](#)).
- (b) Terminals of ECU (See page [DL-46](#)).

NEXT

5 REPAIR OR REPLACEMENT

NEXT

6 CONFIRMATION TEST

NEXT

END

DL

REGISTRATION

HINT:

- Register the recognition code when replacing the door control transmitter or the door control receiver.
- Add mode is used to register new recognition codes while still retaining codes already registered. This mode is used when a new transmitter is added. If the number of registered codes exceeds 4, the previously registered codes will be erased, starting from the first registered code.
- Rewrite mode is used to erase all the previously registered recognition codes in order to register all new recognition codes. This mode is used when the transmitter or the door control receiver is replaced.
- Confirmation mode is used to confirm how many recognition codes have already been registered before another registration code is registered.
- Prohibition mode is used to erase all the registered codes and disables the wireless door lock function. This mode is used when the transmitter is lost.
- All the following registration procedures must be performed in order.

1. REGISTER RECOGNITION CODE

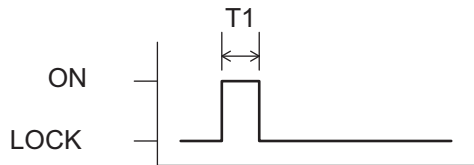
- (a) Procedure "A": Check that the following conditions are met.
 - There is no key in ignition key cylinder.
 - Driver side door is open (other doors are closed).
 - Driver side door is unlocked.
- (b) Procedure "B": Insert the key into the ignition key cylinder, then pull it out. Repeat twice within 5 seconds.
- (c) Procedure "C": Perform the following operations within 40 seconds.
 - (1) Close and open the driver side door twice.
 - (2) Insert the key into the ignition key cylinder, then pull it out.
- (d) Procedure "D": Perform the following operations within 40 seconds.
 - (1) Close and open the driver side door twice.
 - (2) Insert the key into the ignition key cylinder and close the driver side door.

- (e) Procedure "E": Perform the following operations within 40 seconds.
 - (1) Turn ignition switch from LOCK to ON and back to LOCK at approximately 1 second intervals according to the number of times shown below.

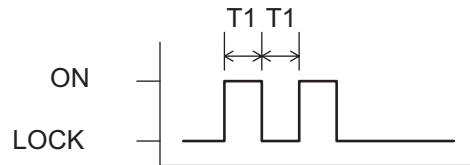
DL

Number of ON-LOCK operations of ignition switch:

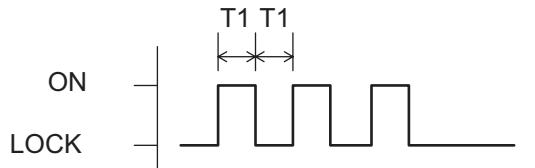
Add Mode ON-LOCK operation: Once



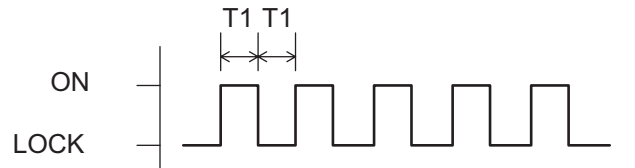
Rewrite Mode ON-LOCK operation: Twice



Confirmation Mode ON-LOCK operation: 3 times



Prohibition Mode ON-LOCK operation: 5 times



T1: Approx. 1 second

B111914E04

HINT:

If the number of ignition switch ON-LOCK operations is 0, 4, 6, or more than 6, there will be no response (power door lock and unlock operation) to show which mode has been selected.

Remove the key from the ignition key cylinder.

(f) Procedure "F": Check that the response to the selected mode occurs within 3 seconds.

Response to selected mode (power door lock operation):

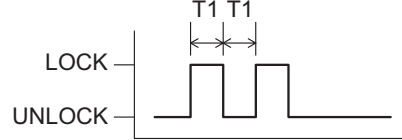
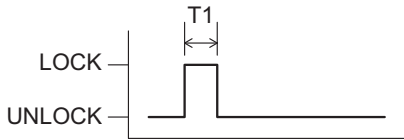
Door control relay automatically performs power door LOCK-UNLOCK operations to indicate which mode has been selected.

Add Mode

LOCK-UNLOCK operation: Once

Rewrite Mode

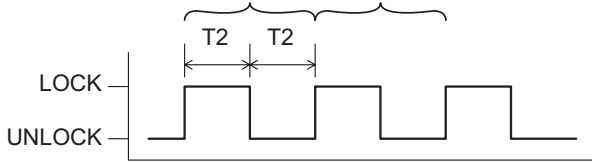
LOCK-UNLOCK operation: Twice



Confirmation Mode

LOCK-UNLOCK operation: The number of registered codes (1 to 5 times)

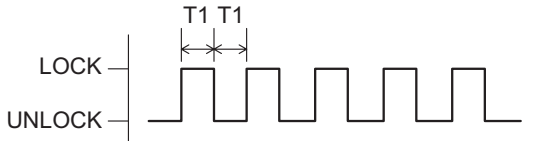
1st Time 2nd Time



T1: Approx. 1 second
T2: Approx. 2 seconds

Prohibition Mode

LOCK-UNLOCK operation: 5 times



B111913E02

HINT:

- In confirmation mode, the LOCK-UNLOCK operation will occur once for each recognition code that has been registered. For example, if 2 recognition codes have been registered, the LOCK-UNLOCK operation will occur 2 times.
- In confirmation mode, if no recognition codes have been registered, the LOCK-UNLOCK operation will occur 5 times.
- If confirmation mode or prohibition mode is selected, the operation ends after the response to the selected mode completes.

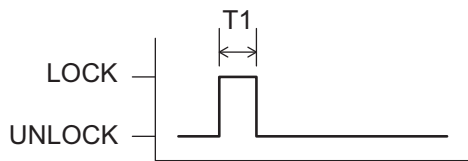
- (g) Procedure "G": Perform the following operations of completing the response to the Add or Rewrite mode.
- (1) Press the LOCK and UNLOCK switches on the transmitter simultaneously.
 - (2) Within 3 seconds of the previous step, press the LOCK or UNLOCK switch.
- (h) Procedure "H": After completing the above procedure, check that the response to the registration completion occurs within 3 seconds.

Response to registration completion:

Door control relay automatically performs power door LOCK-UNLOCK operation to show whether registration has been completed correctly or not.

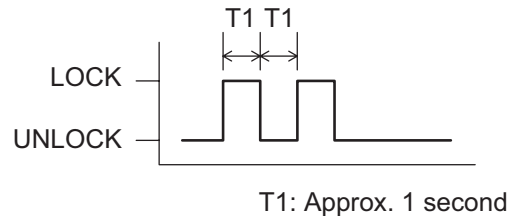
LOCK-UNLOCK Occurs Once

Registration of recognition code has been completed.



LOCK-UNLOCK Occurs Twice

Registration of recognition code has failed.



B111915E02

HINT:

- If the registration of the recognition code has failed, perform the registration procedures from the beginning.
 - If registering another transmitter, return to Procedure "G" within 40 seconds of responding to the selected mode confirmation. All 4 recognition codes can be registered consecutively.
- (i) Perform either of the following to complete registration of the recognition codes (add mode and rewrite mode).
- (1) Open the door.
 - (2) Insert the key into the ignition key cylinder.