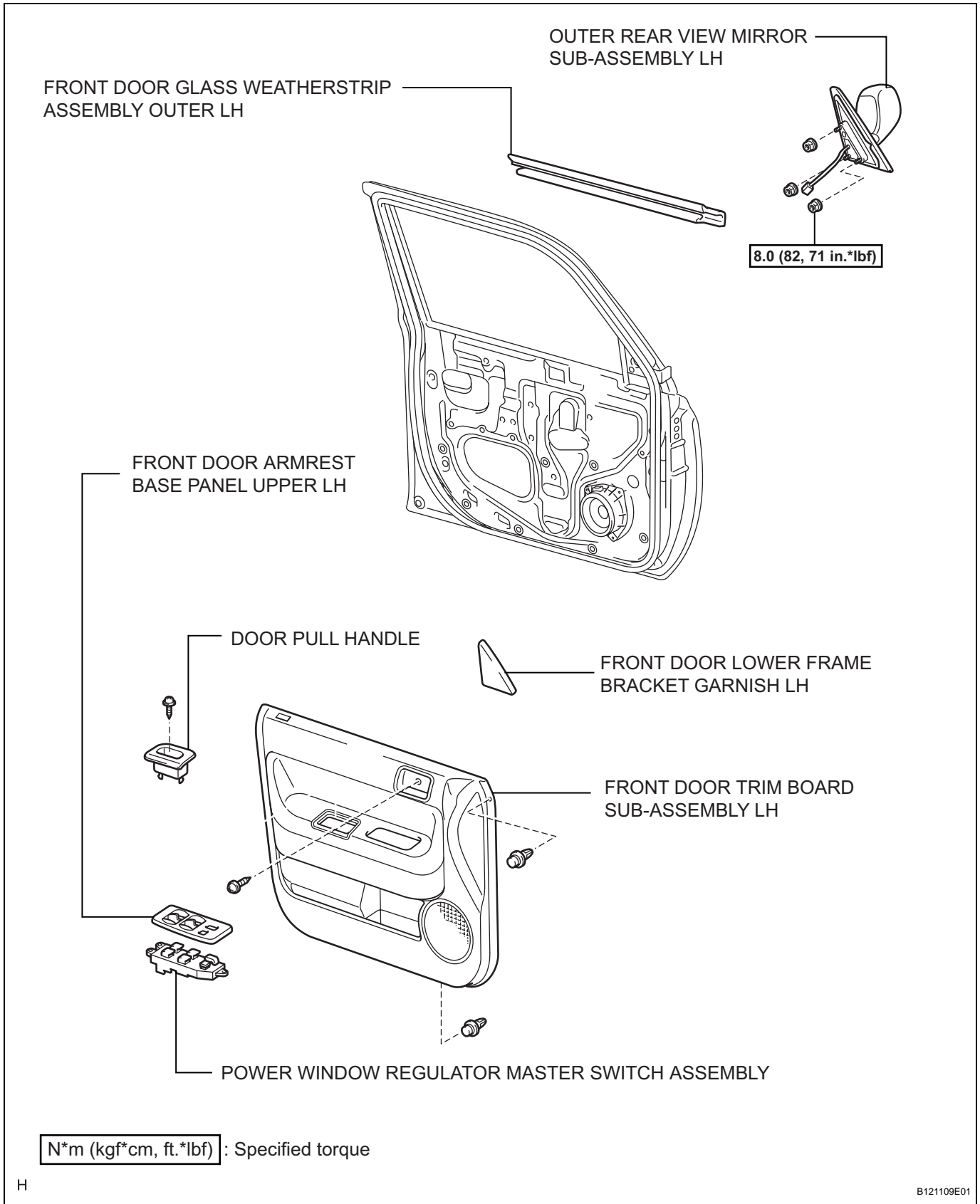


FRONT DOOR GLASS WEATHERSTRIP

COMPONENTS



ET

REMOVAL

HINT:

- Use the same procedures for the RH side and LH side.
- The procedures listed below are for the LH side.

1. DISCONNECT CABLE FROM NEGATIVE BATTERY TERMINAL

CAUTION:

Wait at least 90 seconds after disconnecting the cable from the negative (-) battery terminal to prevent airbag and seat belt pretensioner activation.

2. REMOVE FRONT DOOR LOWER FRAME BRACKET GARNISH LH (See page ED-8)

3. REMOVE DOOR PULL HANDLE (See page ED-8)

4. REMOVE POWER WINDOW REGULATOR MASTER SWITCH ASSEMBLY (See page ED-8)

5. REMOVE FRONT DOOR TRIM BOARD SUB-ASSEMBLY LH (See page ED-9)

6. REMOVE OUTER REAR VIEW MIRROR SUB-ASSEMBLY LH (See page MI-7)

7. REMOVE FRONT DOOR GLASS WEATHERSTRIP ASSEMBLY OUTER LH

- Put protective tape under the weatherstrip.
- Using a moulding remover, detach the claws to remove the moulding as shown in the illustration.

HINT:

Tape the remover tip before use.

