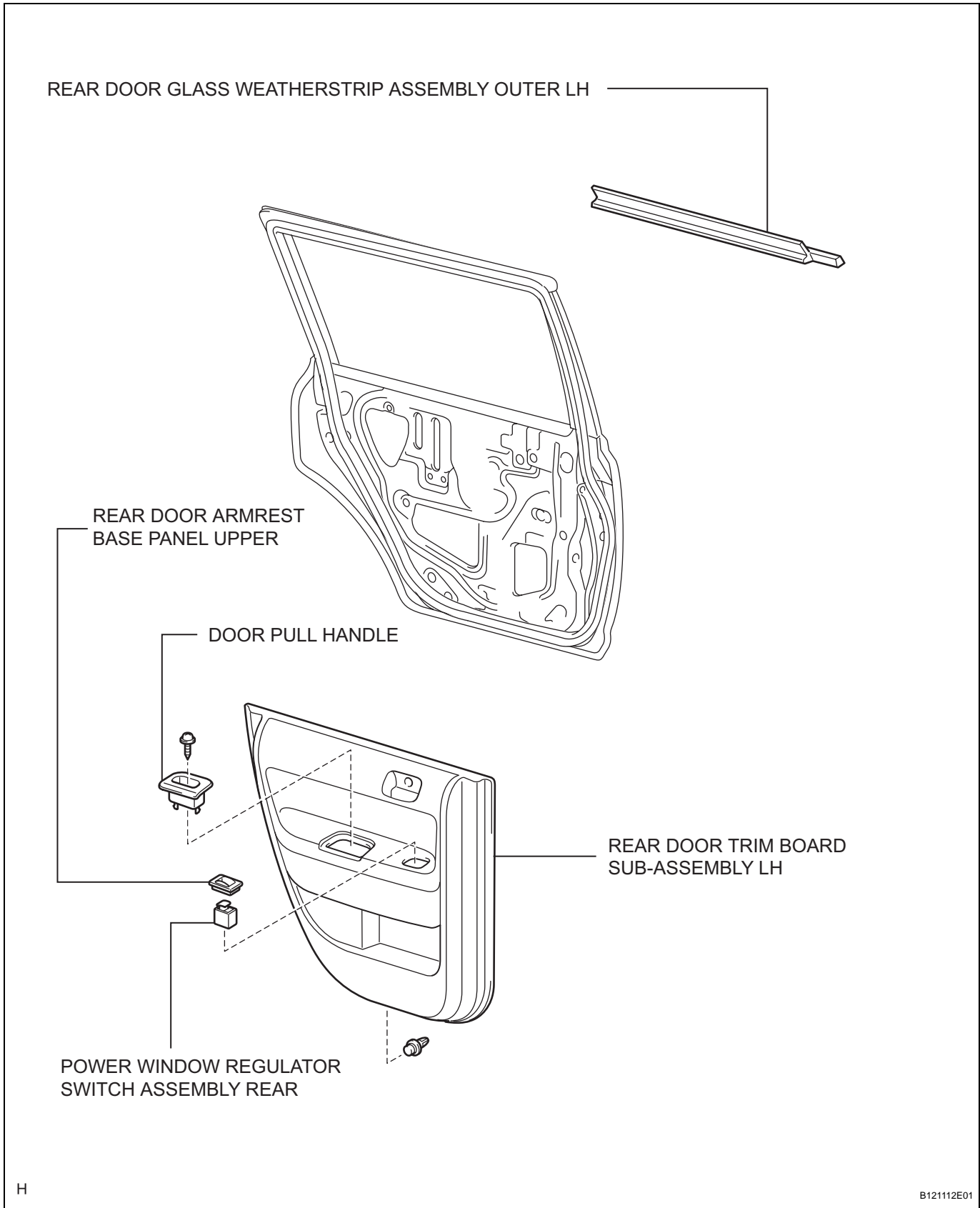


REAR DOOR GLASS WEATHERSTRIP

COMPONENTS



ET

REMOVAL

HINT:

- Use the same procedures for the RH side and LH side.
- The procedures listed below are for the LH side.

1. REMOVE CABLE FROM NEGATIVE BATTERY TERMINAL

CAUTION:

Wait at least 90 seconds after disconnecting the cable from the negative (-) battery terminal to prevent airbag and seat belt pretensioner activation.

2. REMOVE DOOR PULL HANDLE (See page ED-25)

3. REMOVE POWER WINDOW REGULATOR SWITCH ASSEMBLY REAR (See page ED-25)

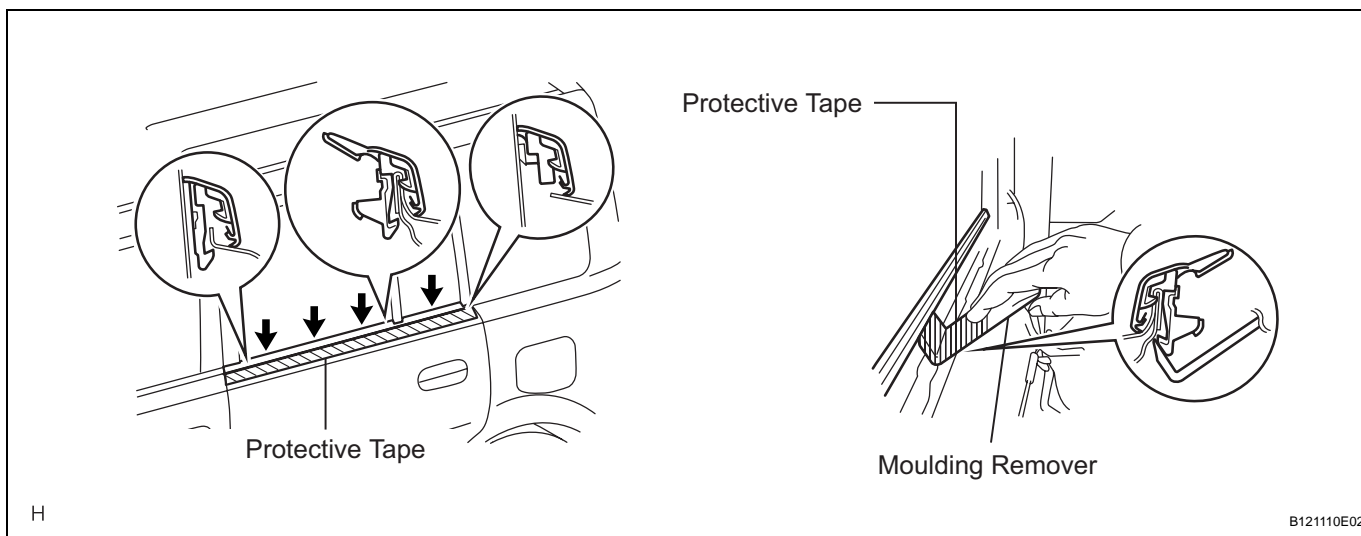
4. REMOVE REAR DOOR TRIM BOARD SUB-ASSEMBLY LH (See page ED-25)

5. REMOVE REAR DOOR GLASS WEATHERSTRIP ASSEMBLY OUTER LH

- Put protective tape under the weatherstrip.
- Using a moulding remover, detach the claws to remove the weatherstrip as shown in the illustration.

HINT:

Tape the remover tip before use.


ET

INSTALLATION

1. INSTALL REAR DOOR GLASS WEATHERSTRIP ASSEMBLY OUTER LH

- Attach the claws to install the weatherstrip.

2. INSTALL REAR DOOR TRIM BOARD SUB-ASSEMBLY LH (See page ED-34)

3. INSTALL POWER WINDOW REGULATOR SWITCH ASSEMBLY REAR (See page ED-34)

4. INSTALL DOOR PULL HANDLE (See page ED-35)

5. CONNECT CABLE TO NEGATIVE BATTERY TERMINAL

