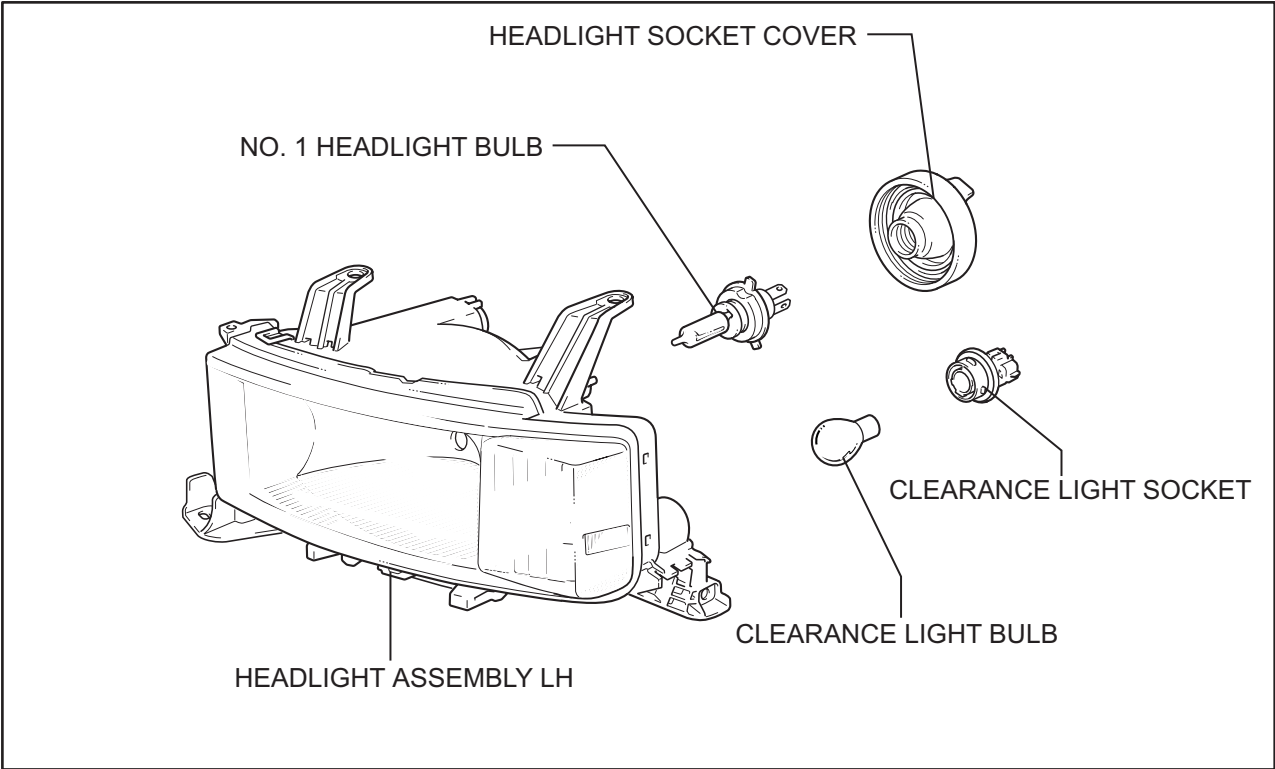
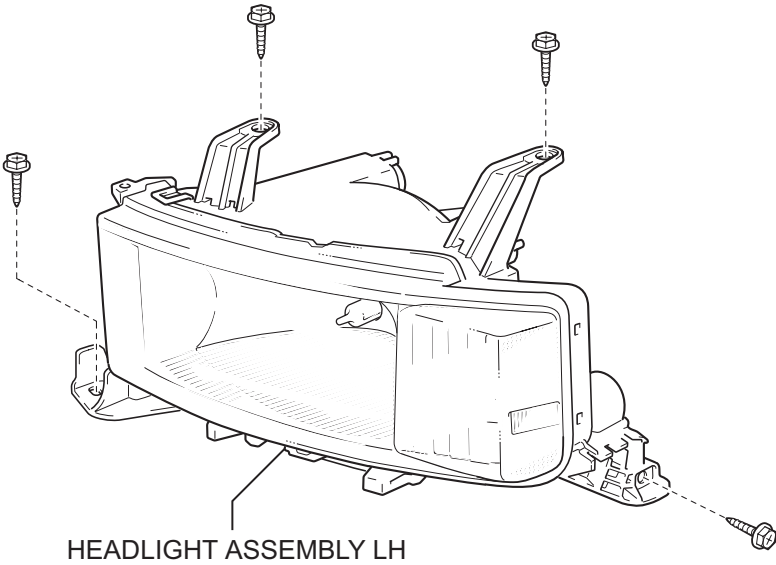


# HEADLIGHT ASSEMBLY

## COMPONENTS



## REMOVAL

### HINT:

- Use the same procedures for the RH side and LH side.
- The procedures listed below are for the LH side.

### 1. DISCONNECT CABLE FROM NEGATIVE BATTERY TERMINAL

#### CAUTION:

Wait at least 90 seconds after disconnecting the cable from the negative (-) battery terminal to prevent airbag and seat belt pretensioner activation

### 2. REMOVE RADIATOR GRILLE (See page [ET-2](#))

### 3. REMOVE FRONT FENDER LINER LH (See page [ET-2](#))

### 4. REMOVE FRONT FENDER LINER RH (See page [ET-2](#))

### 5. REMOVE FRONT BUMPER COVER (See page [ET-2](#))

### 6. REMOVE HEADLIGHT ASSEMBLY LH

- (a) Remove the 4 screws.
- (b) Disconnect the connectors and remove the headlight.

