

# BACK-UP LIGHT SWITCH

## REMOVAL

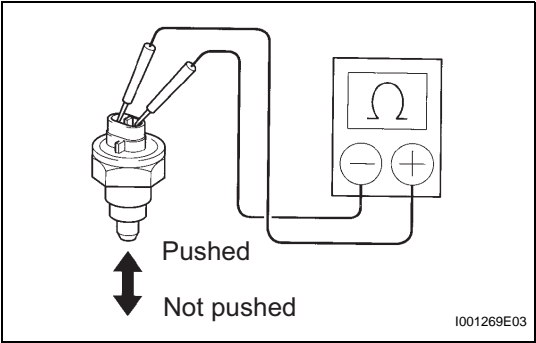
- LI
1. DISCONNECT CABLE FROM NEGATIVE BATTERY TERMINAL  
**CAUTION:**  
Wait at least 90 seconds after disconnecting the cable from the negative (-) battery terminal to prevent airbag and seat belt pretensioner activation.
  2. REMOVE BACK-UP LIGHT SWITCH ASSEMBLY (for Manual Transaxle) (See page [MX-34](#))

## INSPECTION

1. INSPECT BACK-UP SWITCH ASSEMBLY
  - (a) Inspect the back-up light switch.
    - (1) Measure the resistance of the switch.  
**Standard resistance**

Tester Connection	Switch operation	Specified condition
1 - 2	Pushed	Below 1 $\Omega$
1 - 2	Not pushed	10 k $\Omega$ or higher

If the result is not as specified, replace the switch assembly.



---

## INSTALLATION

1. **INSTALL BACK-UP SWITCH ASSEMBLY** (for Manual Transaxle) (See page [MX-64](#))
2. **CONNECT CABLE TO NEGATIVE BATTERY TERMINAL**