

# FRONT DOOR COURTESY SWITCH

## REMOVAL

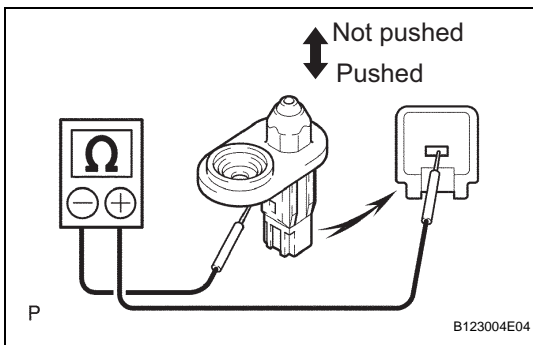
1. DISCONNECT CABLE FROM NEGATIVE BATTERY TERMINAL

### CAUTION:

Wait at least 90 seconds after disconnecting the cable from the negative (-) battery terminal to prevent airbag and seat belt pretensioner activation.

2. REMOVE FRONT DOOR COURTESY SWITCH ASSEMBLY

- (a) Remove the bolt and switch.
- (b) Disconnect the connector.



## INSPECTION

1. INSPECT FRONT DOOR COURTESY SWITCH ASSEMBLY

- (a) Inspect the front door courtesy switch.
  - (1) Measure the resistance of the switch.

### Standard resistance

Tester Connection	Switch Operation	Specified Condition
1 - Switch body	Pushed	10 k $\Omega$ or higher
1 - Switch body	Not pushed	Below 1 $\Omega$

If the result is not as specified, replace the switch assembly.

## INSTALLATION

1. **INSTALL FRONT DOOR COURTESY SWITCH ASSEMBLY**
  - (a) Connect the connector.
  - (b) Install the switch with the bolt.
2. **CONNECT CABLE TO NEGATIVE BATTERY TERMINAL**