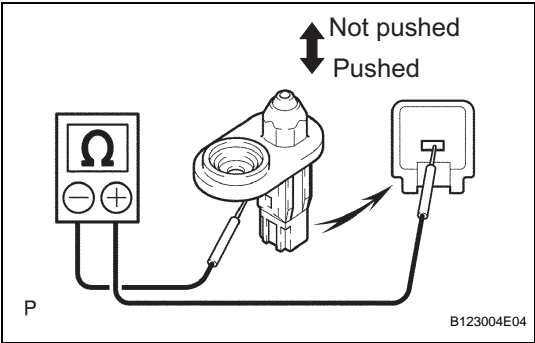


REAR DOOR COURTESY SWITCH

REMOVAL

1. DISCONNECT CABLE FROM NEGATIVE BATTERY
TERMINAL
CAUTION:
Wait at least 90 seconds after disconnecting the
cable from the negative (-) battery terminal to
prevent airbag and seat belt pretensioner activation.
2. REMOVE REAR DOOR COURTESY SWITCH
ASSEMBLY
(a) Remove the bolt and switch.
(b) Disconnect the connector.



INSPECTION

1. INSPECT REAR DOOR COURTESY SWITCH
ASSEMBLY
(a) Inspect the rear door courtesy switch.
(1) Measure the resistance of the switch.

Standard resistance

Tester Connection	Switch Operation	Specified Condition
1 - Switch body	Pushed	10 kΩ or higher
1 - Switch body	Not pushed	Below 1 Ω

If the result is not as specified, replace the switch assembly.

INSTALLATION

1. **INSTALL REAR DOOR COURTESY SWITCH ASSEMBLY**
 - (a) Connect the connector.
 - (b) Install the switch with the bolt.
2. **CONNECT CABLE TO NEGATIVE BATTERY TERMINAL**