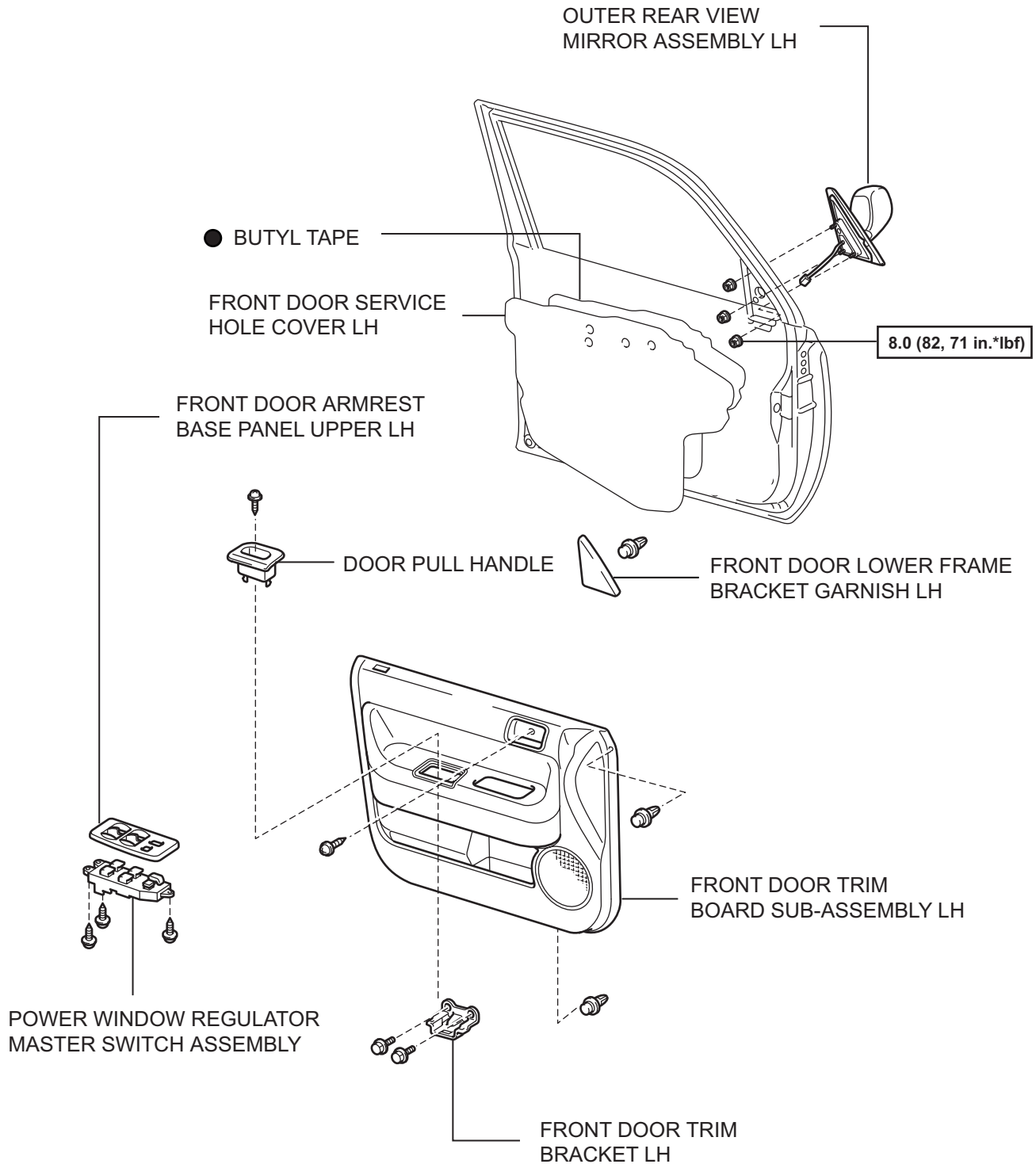


# OUTER REAR VIEW MIRROR

## COMPONENTS



N\*m (kgf\*cm, ft.\*lbf) : Specified torque

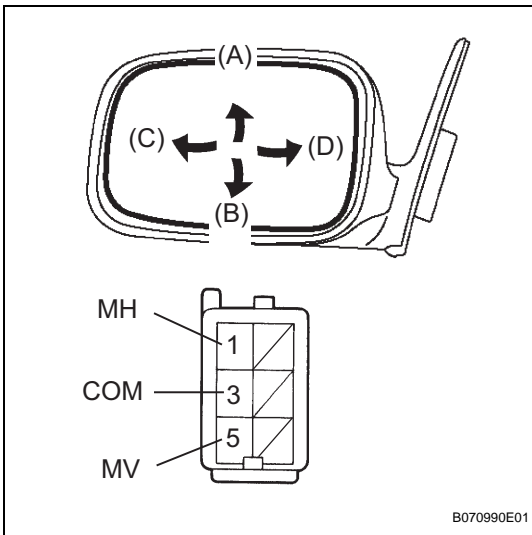
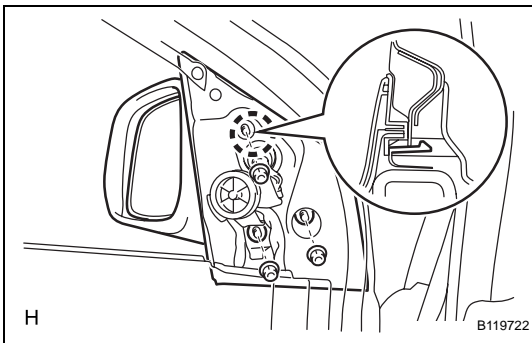
● Non-reusable part

## REMOVAL

### HINT:

- Use the same procedures for the RH side and LH side.
- The procedures listed below are for the LH side.

1. REMOVE FRONT DOOR LOWER FRAME BRACKET GARNISH LH (See page [ED-8](#))
2. REMOVE DOOR PULL HANDLE (See page [ED-8](#))
3. REMOVE POWER WINDOW REGULATOR MASTER SWITCH ASSEMBLY (See page [ED-8](#))
4. REMOVE FRONT DOOR TRIM BOARD SUB-ASSEMBLY LH (See page [ED-9](#))
5. REMOVE FRONT DOOR SERVICE HOLE COVER LH (See page [ED-9](#))
6. REMOVE OUTER REAR VIEW MIRROR ASSEMBLY LH
  - (a) Disconnect the connector.
  - (b) Remove the 3 nuts and mirror.



## INSPECTION

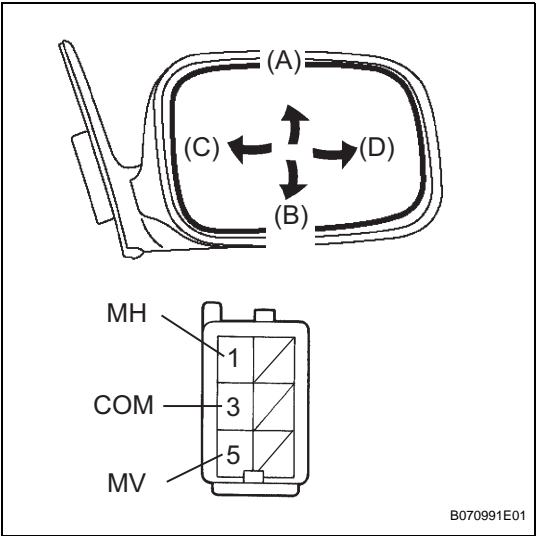
1. INSPECT OUTER REAR VIEW MIRROR ASSEMBLY LH

- (a) Apply battery voltage to the mirror and check the operation of the mirror.

OK

Measurement Condition	Mirror Condition
Battery positive (+) → 5 (MV) Battery negative (-) → 3 (COM)	Turns upward (A)
Battery positive (+) → 3 (COM) Battery negative (-) → 5 (MV)	Turns downward (B)
Battery positive (+) → 1 (MH) Battery negative (-) → 3 (COM)	Turns left (C)
Battery positive (+) → 3 (COM) Battery negative (-) → 1 (MH)	Turns right (D)

If the result is not as specified, replace the mirror assembly.



2. INSPECT OUTER REAR VIEW MIRROR ASSEMBLY RH

- (a) Apply battery voltage to the mirror and check the operation of the mirror.

OK

Measurement Condition	Mirror Condition
Battery positive (+) → 5 (MV) Battery negative (-) → 3 (COM)	Turns upward (A)
Battery positive (+) → 3 (COM) Battery negative (-) → 5 (MV)	Turns downward (B)
Battery positive (+) → 1 (MH) Battery negative (-) → 3 (COM)	Turns left (C)
Battery positive (+) → 3 (COM) Battery negative (-) → 1 (MH)	Turns right (D)

If the result is not as specified, replace the mirror assembly.