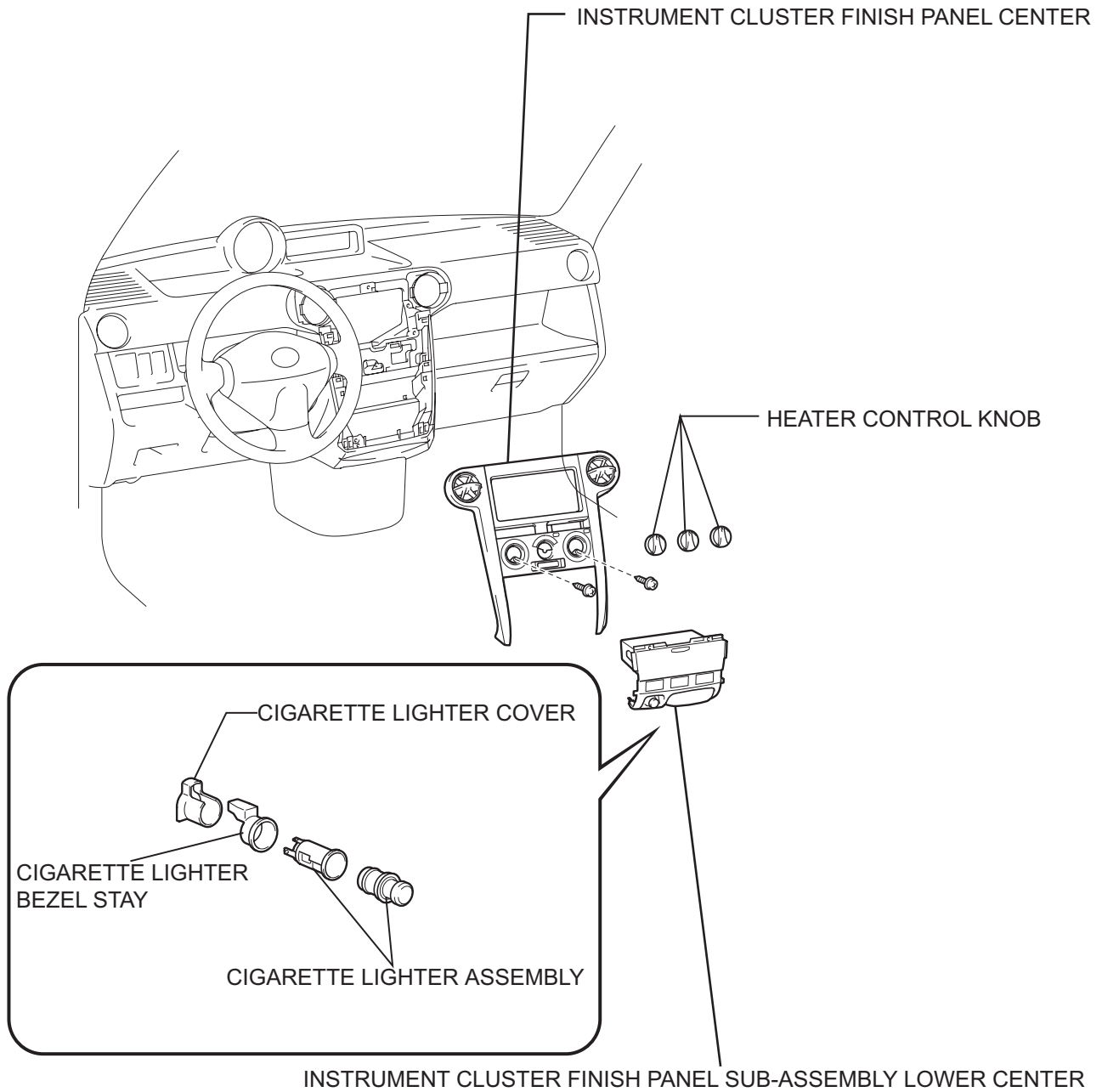


# CIGARETTE LIGHTER ASSEMBLY

## COMPONENTS



## REMOVAL

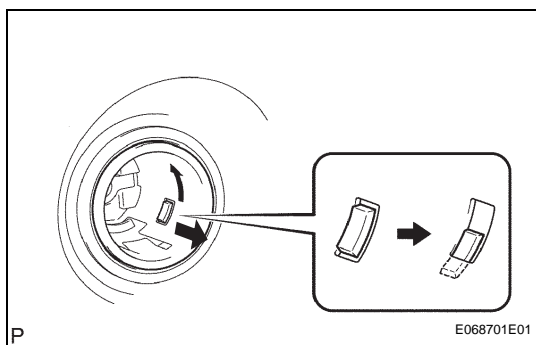
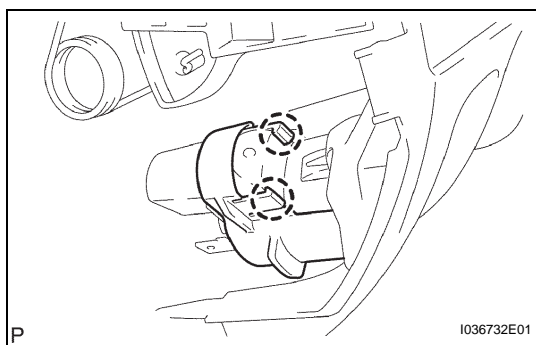
1. **DISCONNECT CABLE FROM NEGATIVE BATTERY TERMINAL**

### CAUTION:

Wait at least 90 seconds after disconnecting the cable from the negative (-) battery terminal to prevent airbag and seat belt pretensioner activation.

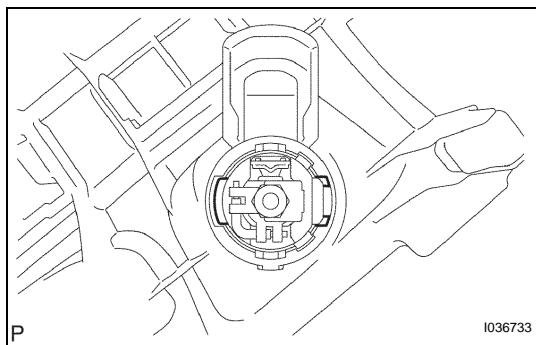
2. **REMOVE INSTRUMENT CLUSTER FINISH PANEL CENTER** (See page [IP-6](#))
3. **REMOVE HEATER CONTROL KNOB** (See page [AC-99](#))
4. **REMOVE INSTRUMENT CLUSTER FINISH PANEL SUB-ASSEMBLY LOWER CENTER** (See page [IP-18](#))
5. **REMOVE CIGARETTE LIGHTER COVER**

- (a) Detach the 2 claws and remove the cigarette lighter cover.



6. **REMOVE CIGARETTE LIGHTER ASSEMBLY**

- (a) Remove the cigarette lighter knob and element.
- (b) Turn the socket in the direction as shown in the illustration, disengage the claw between the socket and the cigarette lighter bezel stay, and pull out the socket.



- (c) Align the socket with the notch on the cigarette lighter bezel stay, and remove the cigarette lighter.