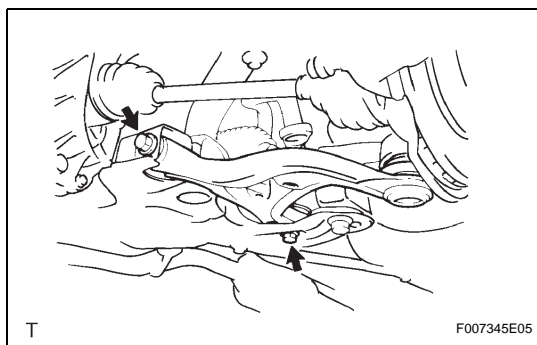
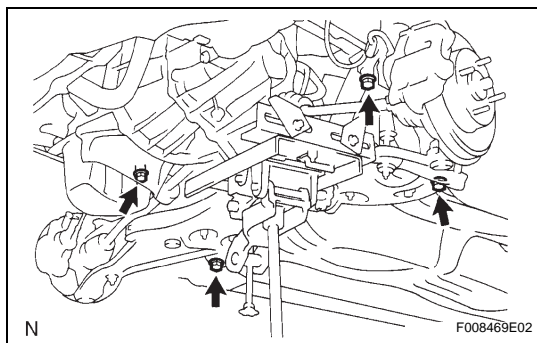


## 11. DISCONNECT FRONT SUSPENSION CROSSMEMBER SUB-ASSEMBLY

- (a) Remove the bolt and 2 nuts.
- (b) Support the crossmember with a jack.
- (c) Remove the 4 bolts and disconnect the crossmember.

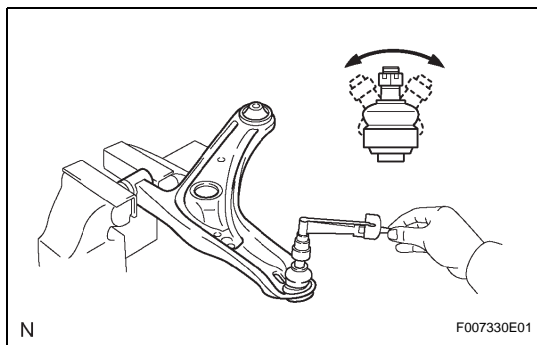


## 12. REMOVE FRONT SUSPENSION NO. 1 LOWER ARM SUB-ASSEMBLY LH

- (a) Remove the 2 bolts, nut and lower arm.

### NOTICE:

Do not turn the nut.



## INSPECTION

### 1. INSPECT FRONT SUSPENSION NO. 1 LOWER ARM SUB-ASSEMBLY LH

- (a) As shown in the illustration, flip the ball joint stud back and forth 5 times before installing the nut.
- (b) Using a torque wrench, turn the nut continuously at a rate of 2 to 4 seconds per turn and take the torque reading on the fifth turn.

### HINT:

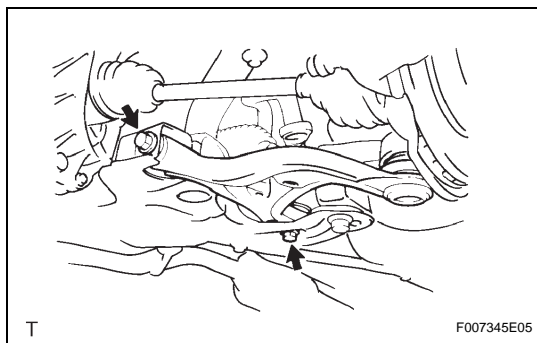
A bolt without a torque specification is shown in the standard bolt chart (see page [SS-32](#)).

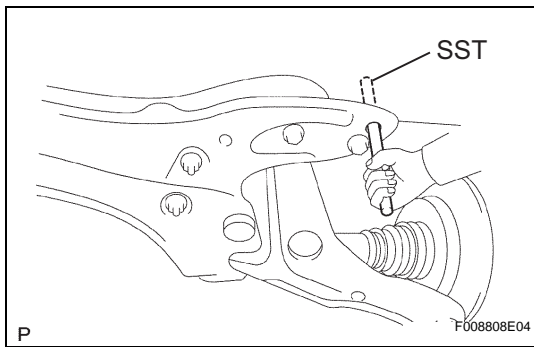
SP

## INSTALLATION

### 1. TEMPORARILY INSTALL FRONT SUSPENSION NO. 1 LOWER ARM SUB-ASSEMBLY LH

- (a) Temporarily install the lower arm with the 2 bolts and nut.



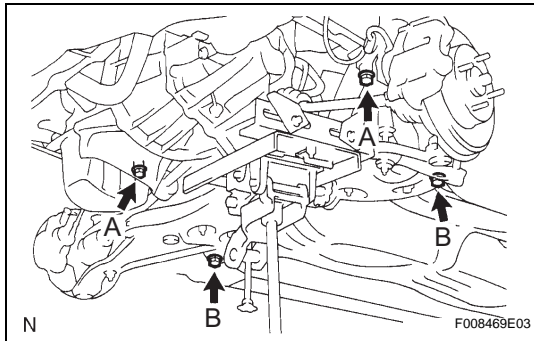


## 2. CONNECT FRONT SUSPENSION CROSSMEMBER SUB-ASSEMBLY

- (a) Using SST, align the holes of the suspension crossmember and body.

**SST 09670-00010**

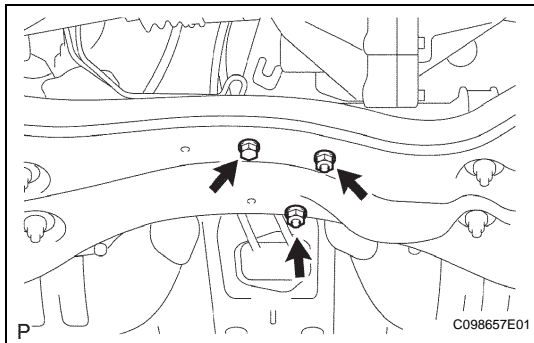
- (b) Perform the procedure above on the other side.



- (c) Install the suspension crossmember with the 4 bolts.

**Torque: 70 N\*m (715 kgf\*cm, 52 ft.\*lbf) for bolt A**

**116 N\*m (1,180 kgf\*cm, 86 ft.\*lbf) for bolt B**



- (d) Install the bolt and 2 nuts.

**Torque: 80 N\*m (816 kgf\*cm, 59 ft.\*lbf)**

## 3. INSTALL FRONT SUSPENSION MEMBER REINFORCEMENT LH

- (a) Install the reinforcement with the 2 bolts.

**Torque: 47 N\*m (480 kgf\*cm, 35 ft.\*lbf)**

## 4. INSTALL FRONT SUSPENSION MEMBER REINFORCEMENT RH

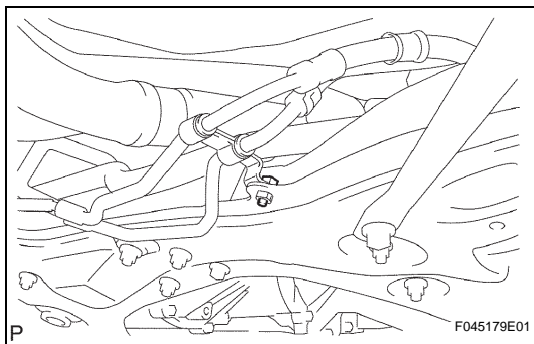
- (a) Install the reinforcement with the 2 bolts.

**Torque: 47 N\*m (480 kgf\*cm, 35 ft.\*lbf)**

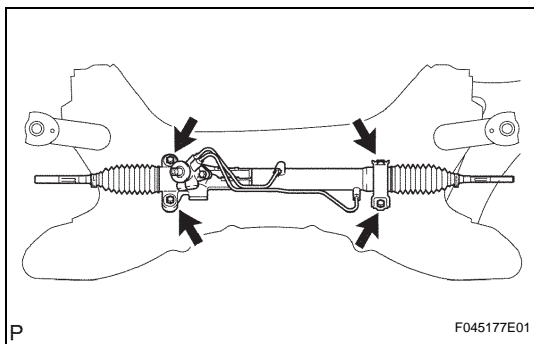
## 5. CONNECT PRESSURE FEED TUBE ASSEMBLY

- (a) Connect the pressure feed tube with the bolt.

**Torque: 7.8 N\*m (80 kgf\*cm, 69 in.\*lbf)**



SP



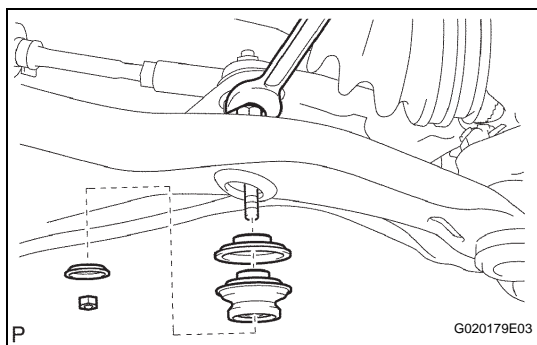
## 6. CONNECT POWER STEERING LINK ASSEMBLY

- (a) Install the steering link with the 4 bolts and 4 nuts.

**Torque: 74 N\*m (755 kgf\*cm, 55 ft.\*lbf)**

**NOTICE:**

**Do not turn the nut.**

**7. CONNECT FRONT STABILIZER BAR**

- (a) Install the 2 retainers and cushion.
- (b) While holding the stabilizer bolt with a wrench, install the nut.

**Torque: 18 N\*m (180 kgf\*cm, 13 ft.\*lbf)**

**HINT:**

Support the lower arm with a jack.

- (c) Perform the procedure above on the other side.

**8. CONNECT FRONT SUSPENSION NO. 1 LOWER ARM SUB-ASSEMBLY LH**

- (a) Connect the lower arm to the steering knuckle with the nut.

**Torque: 98 N\*m (1,000 kgf\*cm, 72 ft.\*lbf)**

- (b) Install a new clip.

**NOTICE:**

If the holes for the clip are not aligned, tighten the nut further up to 60°.

**9. CONNECT FRONT SUSPENSION NO. 1 LOWER ARM SUB-ASSEMBLY RH**

**HINT:**

Use the same procedures described for the LH side.

**10. INSTALL FRONT WHEEL**

**Torque: 103 N\*m (1,050 kgf\*cm, 76 ft.\*lbf)**

**11. FULLY TIGHTEN FRONT SUSPENSION NO. 1 LOWER ARM SUB-ASSEMBLY LH**

- (a) Fully tighten the lower arm with the 2 bolts.

**Torque: 88 N\*m (900 kgf\*cm, 65 ft.\*lbf) for bolt A**  
**132 N\*m (1,350 kgf\*cm, 97 ft.\*lbf) for bolt B**

**NOTICE:**

Do not turn the nut.

**12. INSTALL HOOD SUB-ASSEMBLY****13. INSPECT AND ADJUST HOOD SUB-ASSEMBLY****14. INSPECT AND ADJUST FRONT WHEEL ALIGNMENT**

- (a) Inspect and adjust the front wheel alignment (see page [SP-2](#)).