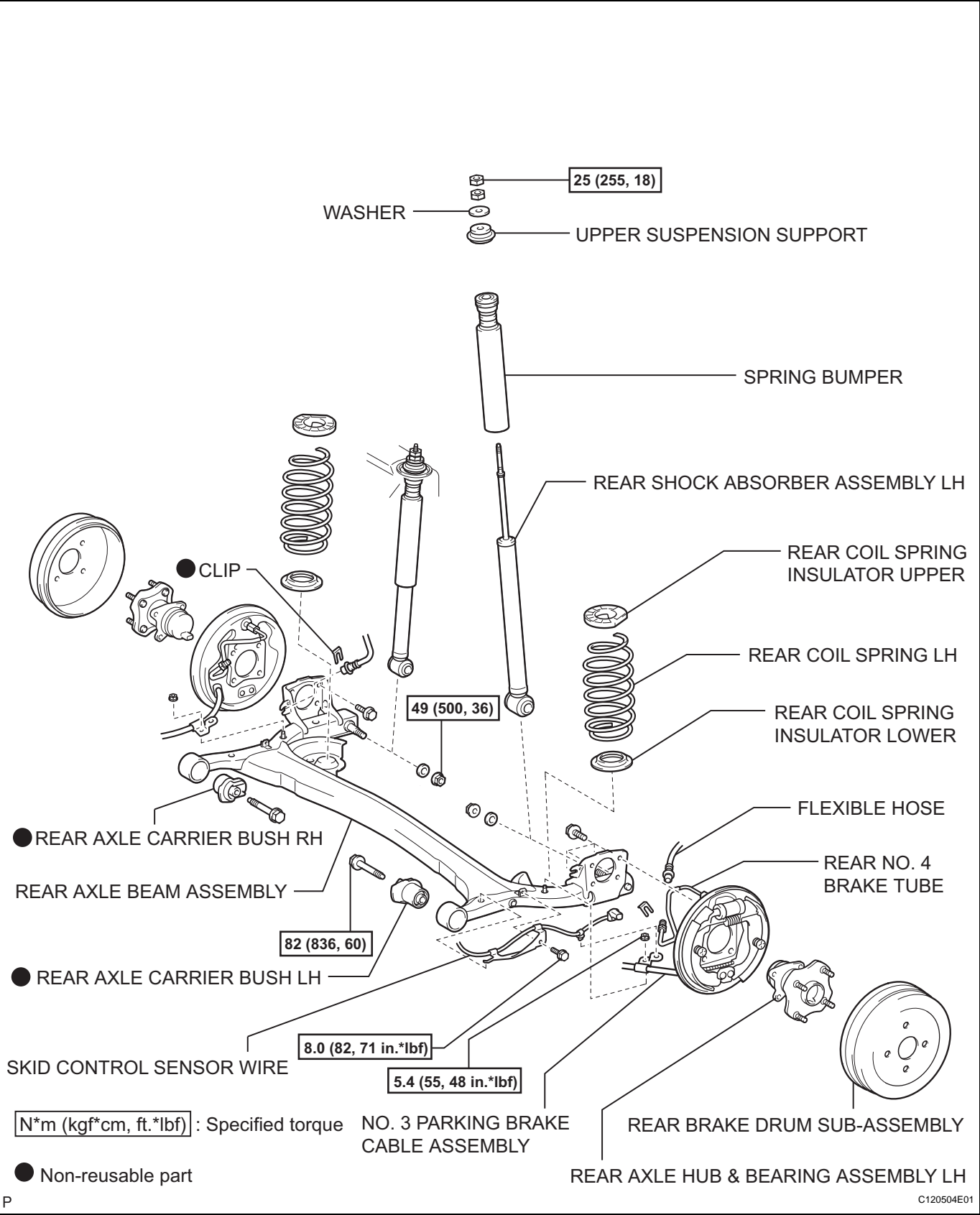


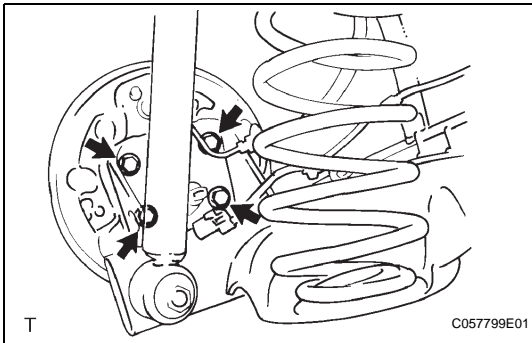
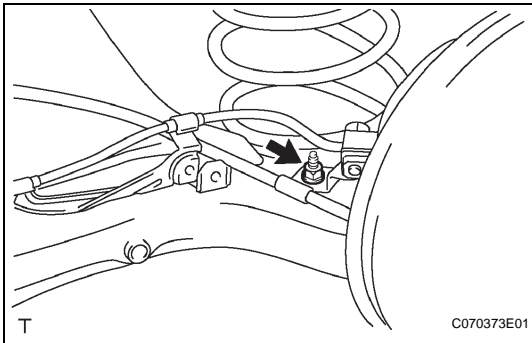
REAR AXLE BEAM

COMPONENTS



REMOVAL

1. REMOVE REAR WHEEL
2. DISCONNECT SKID CONTROL SENSOR WIRE
3. DISCONNECT REAR NO. 4 BRAKE TUBE (See page [SP-27](#))
4. DISCONNECT REAR NO. 3 BRAKE TUBE (See page [SP-27](#))
5. DISCONNECT NO. 3 PARKING BRAKE CABLE ASSEMBLY (See page [SP-27](#))
6. DISCONNECT NO. 2 PARKING BRAKE CABLE ASSEMBLY (See page [SP-27](#))
7. REMOVE REAR BRAKE DRUM SUB-ASSEMBLY (See page [BR-31](#))
8. REMOVE REAR AXLE HUB AND BEARING ASSEMBLY LH
 - (a) Remove the nut and disconnect the No. 3 parking brake cable from the axle beam.



- (b) Remove the 4 bolts and axle hub and bearing.
 - (c) Disconnect the brake from the axle beam.
9. REMOVE REAR AXLE HUB AND BEARING ASSEMBLY RH

HINT:
Use the same procedures described for the LH side.
10. LOOSEN REAR AXLE BEAM ASSEMBLY
11. DISCONNECT REAR SHOCK ABSORBER ASSEMBLY LH (See page [SP-28](#))
12. DISCONNECT REAR SHOCK ABSORBER ASSEMBLY RH (See page [SP-28](#))
13. REMOVE REAR COIL SPRING LH (See page [SP-28](#))
14. REMOVE REAR COIL SPRING RH

HINT:
Use the same procedures described for the LH side.