

INSTALLATION

HINT:

- Use the same procedures for the LH side and RH side.
- The procedures listed below are for the RH side.
- A bolt without a torque specification is shown in the standard bolt chart (see page SS-2).

1. INSTALL NO. 1 QUARTER WINDOW GUIDE PIECE PIN

(a) Using a brush or sponge, apply Primer G to the installation part of the pins.

(b) Install new pins.

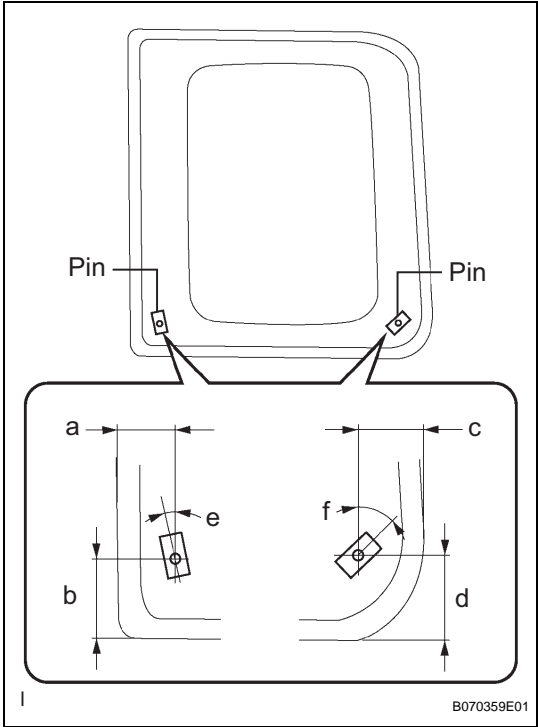
NOTICE:

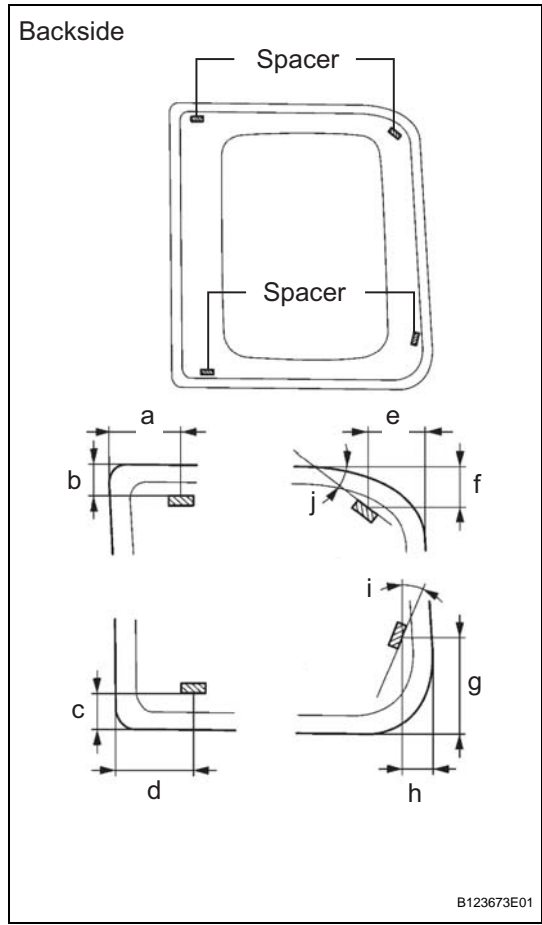
- Allow the primer coating to dry for 3 minutes or more.
- Throw away any leftover primer.
- Do not apply too much primer.

Standard measurement

Area	Specified Condition
a	40.0 mm (1.575 in.)
b	40.0 mm (1.575 in.)
c	37.0 mm (1.457 in.)
d	42.0 mm (1.654 in.)
e	11°
f	46.4°

WS





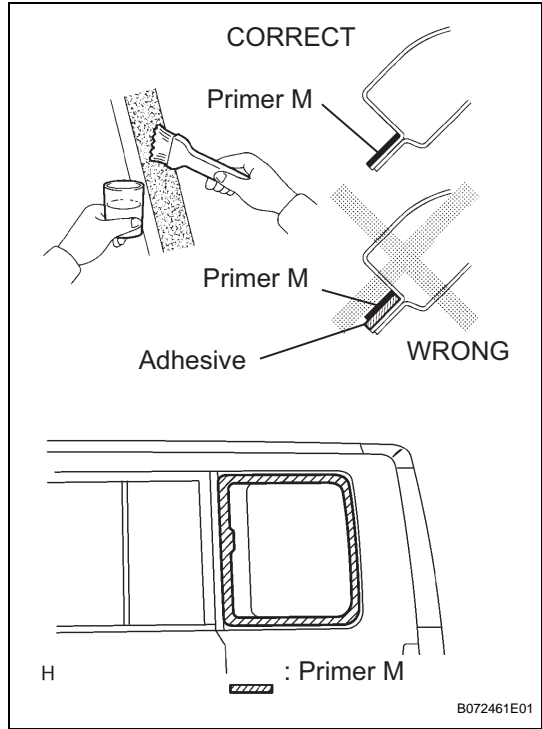
2. INSTALL QUARTER WINDOW GLASS SPACER

- (a) Using a brush or sponge, apply Primer G to the installation part of the spacers.
- (b) Install new spacers.

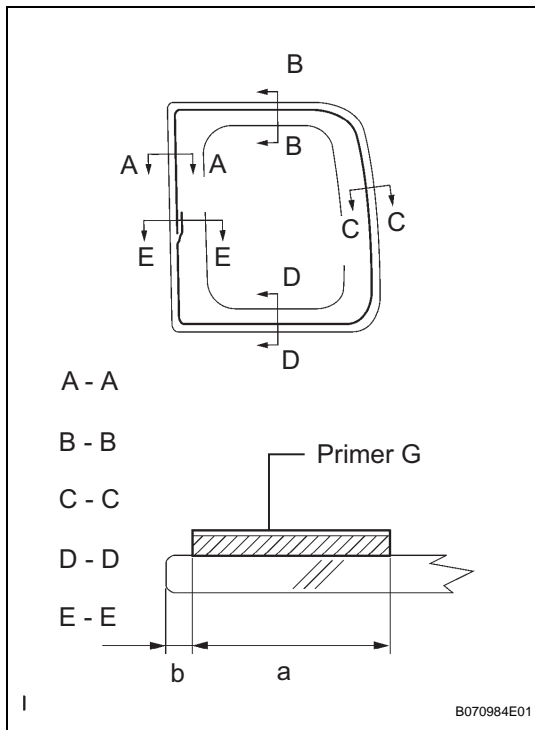
NOTICE:

- Allow the primer coating to dry for 3 minutes or more.
 - Throw away any leftover primer.
 - Do not apply too much primer.
- Standard measurement

Area	Specified Condition
a	41.0 mm (1.614 in.)
b	19.0 mm (0.748 in.)
c	20.0 mm (0.787 in.)
d	45.0 mm (1.772 in.)
e	28.0 mm (1.102 in.)
f	23.0 mm (0.906 in.)
g	63.0 mm (2.480 in.)
h	21.0 mm (0.827 in.)
i	4°
j	31°



3. INSTALL QUARTER WINDOW ASSEMBLY RH



- (a) Using a brush, apply Primer M to the exposed part of the vehicle body.

NOTICE:

- Allow the primer to dry for 3 minutes or more.
- Do not apply primer to the adhesive.
- Throw away any leftover primer.
- Do not apply too much primer.

- (b) Using a brush or sponge, apply Primer G to the contact surface of the quarter window glass.

Standard measurement

Item		Specified Condition
A - A	a	14.0 mm (0.551 in.)
	b	8.6 mm (0.338 in.)
B - B	a	14.0 mm (0.551 in.)
	b	5.0 mm (0.197 in.)
C - C D - D	a	14.0 mm (0.551 in.)
	b	6.0 mm (0.236 in.)
E - E	a	22.0 mm (0.866 in.)
	b	8.6 mm (0.339 in.)

HINT:

If primer is applied to an area that is specified, wipe off the primer with white gasoline before it dries.

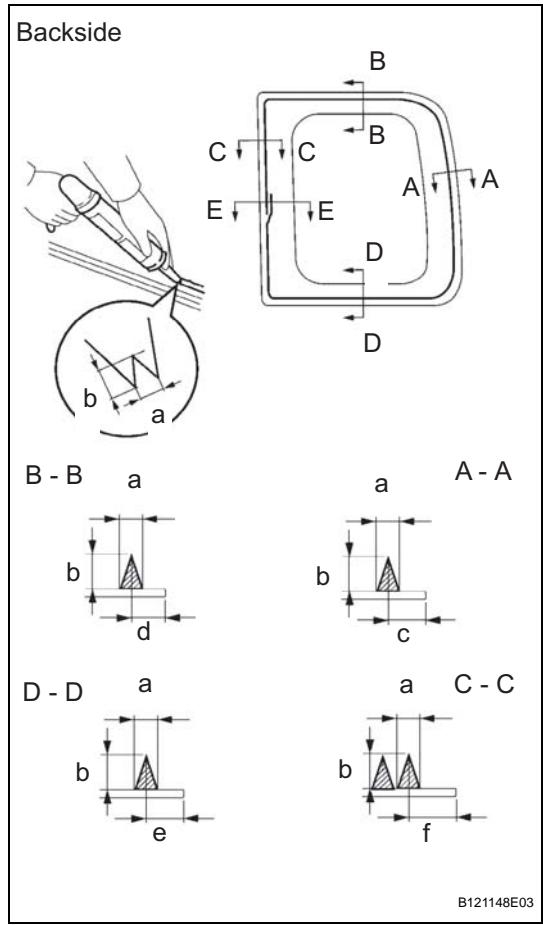
NOTICE:

- Allow the primer to dry for 3 minutes or more.
- Throw away any leftover primer.
- Do not apply too much primer.

- (c) Apply adhesive to the quarter window glass.

Adhesive:

Part No. 08850-00801 or equivalent



- (1) Cut off the tip of the cartridge nozzle as shown in the illustration.

Standard measurement

Area	Specified Condition
a	8.0 mm (0.315 in.)
b	12.0 mm (0.472 in.)
c	13.0 mm (0.512 in.)
d	12.0 mm (0.472 in.)
e	13.0 mm (0.512 in.)
f	15.5 mm (0.610 in.)

HINT:

After cutting off the tip, use all adhesive within the time written in the table below.

Usage time frame

Temperature	Usage Time Frame
35°C (95°F)	15 minutes
20°C (68°F)	1 hour 40 minutes
5°C (41°F)	8 hours

- (2) Load the sealer gun with the cartridge.
- (3) Apply adhesive to the quarter window glass as shown in the illustration.
- (d) Install the quarter window glass to the vehicle body.
- (1) Hold the quarter window glass in place securely with protective tape or equivalent until the adhesive hardens.

NOTICE:

- Allow the primer coating to dry for 3 minutes or more.
- Check that the guide piece pins are attached to the body correctly.
- Check the clearance between the body and glass.

- (2) Lightly press the front surface of the glass to ensure a close fit.
- (3) Using a scraper, remove any excess or protruding adhesive.

HINT:

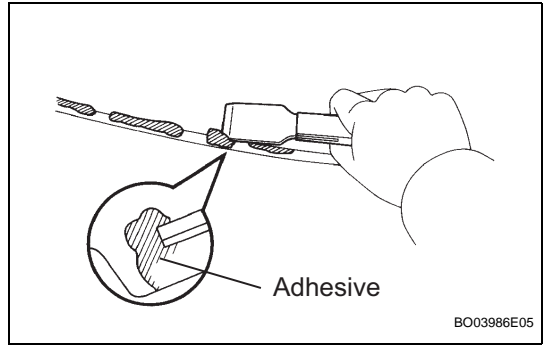
Apply adhesive onto the glass rim.

NOTICE:

Do not drive the vehicle within the time written in the table below.

Minimum time

Temperature	Minimum time prior to driving vehicle
35°C (95°F)	1 hour 30 minutes
20°C (68°F)	5 hours
5°C (41°F)	24 hours



4. INSTALL ROOF SIDE GARNISH INNER RH (See page IR-10)

5. **INSTALL DECK TRIM SIDE PANEL ASSEMBLY RH**
(See page [IR-10](#))
6. **INSTALL REAR SEAT 3 POINT TYPE BELT ASSEMBLY OUTER RH** (See page [SB-25](#))
7. **INSTALL REAR DECK TRIM COVER** (See page [IR-11](#))
8. **INSTALL BACK DOOR WEATHERSTRIP**
9. **INSTALL DECK FLOOR BOX LH**
10. **INSTALL DECK FLOOR BOX RH**
11. **INSTALL NO. 1 DECK BOARD**
12. **INSTALL NO. 2 DECK BOARD**
13. **INSTALL REAR DOOR OPENING TRIM WEATHERSTRIP RH**
14. **INSTALL REAR DOOR SCUFF PLATE RH** (See page [IR-12](#))
15. **INSTALL REAR SEATBACK HINGE SUB-ASSEMBLY RH** (See page [SE-16](#))
16. **INSTALL CHILD RESTRAINT SEAT ANCHOR BRACKET SUB-ASSEMBLY** (See page [SE-16](#))
17. **INSTALL REAR SEAT CUSHION WITH COVER PAD SUB-ASSEMBLY** (See page [SE-17](#))
18. **INSTALL REAR SEATBACK ASSEMBLY RH** (See page [SE-17](#))
19. **INSTALL REAR SEATBACK ASSEMBLY LH** (See page [SE-17](#))
20. **CHECK FOR LEAKS AND REPAIR**
 - (a) Conduct a leak test after the adhesive has completely hardened.
 - (b) Seal any leaks with auto glass sealer.