



# TOYOTA Technical Service BULLETIN

January 18, 2002

Title:  
**REPLACEMENT VIN PLATES**  
Models:  
**All Models**

# T S B

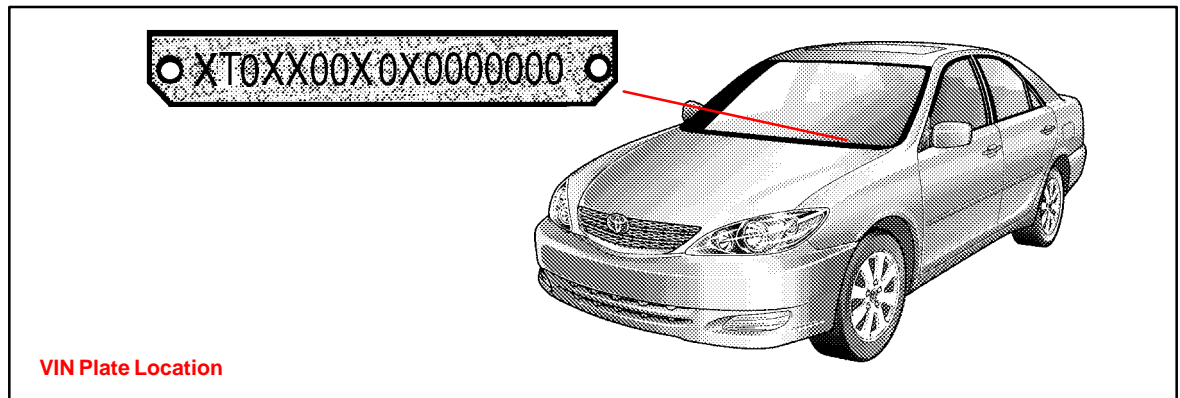
PRODUCT GENERAL INFORMATION  
PG009-02

**TSB UPDATE NOTICE:**

The information contained in this TSB updates PG007-01 dated May 4, 2001. Revised text is **red** and **underlined**. The changes will take place February 1, 2002.

**Introduction**

Replacement **VIN** plates (metal plates riveted to dashboard) **may be** available from Toyota providing the request meets the criteria listed below.



**Applicable Vehicles**

- All Toyota vehicles.

**Replacement VIN Plate Criteria**

- The vehicle is in an accident and the plate is damaged.

**NOTE:**

**The original plate to be replaced MUST accompany the request.**

**NOTE:**

If a plate is stolen, be sure to contact the State Police or your State's Department of Motor Vehicles (DMV). In most cases the State DMV will issue a unique number so that the original number can be included on stolen vehicle listings. If this is the case, a replacement plate is **NOT** available from Toyota. However, the original VIN, **NOT** the state issued VIN, must be used on all warranty claims.

**Procurement Procedure**

To request a replacement plate, complete a copy of the form on the back of this page. Note that the damaged VIN plate **MUST** accompany the request form. Your dealer parts account will be billed **\$25.00** for each replacement of a damaged plate.

**NOTE:**

All replacement plates for damaged and/or stolen vehicles are subject to approval by the Technical Compliance Department. If you have any specific questions, contact (310) 468-3390.

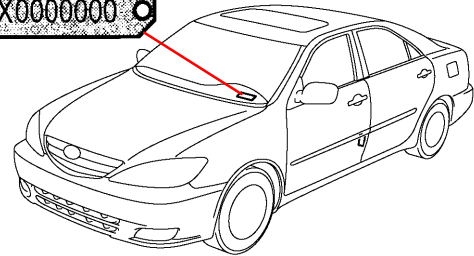
**Warranty Information**

OP CODE	DESCRIPTION	TIME	OPN	T1	T2
N/A	Not Applicable to Warranty	-	-	-	-





# APPLICATION FOR REPLACEMENT VIN PLATE



### REASON FOR REPLACEMENT

ACCIDENT DAMAGE

OTHER \_\_\_\_\_

REASON/EXPLANATION

PLEASE PROVIDE CORRECT VIN \_\_\_\_\_



## DEALER INFORMATION

DEALER CODE:

DEALER NAME: \_\_\_\_\_

ADDRESS: \_\_\_\_\_  
STREET ADDRESS

\_\_\_\_\_  
CITY, STATE, ZIP CODE

TELEPHONE: (    ) \_\_\_\_\_  
AREA CODE, TELEPHONE NUMBER

CONTACT: \_\_\_\_\_  
FIRST NAME, LAST NAME

**MAIL (DO NOT FAX) THE COMPLETED REQUEST FORM WITH THE OLD PLATE TO:**  
**TOYOTA MOTOR SALES, U.S.A. INC.**  
**TECHNICAL COMPLIANCE DEPARTMENT, S207**  
**19001 S. WESTERN AVENUE**  
**TORRANCE, CA. 90509-2991**